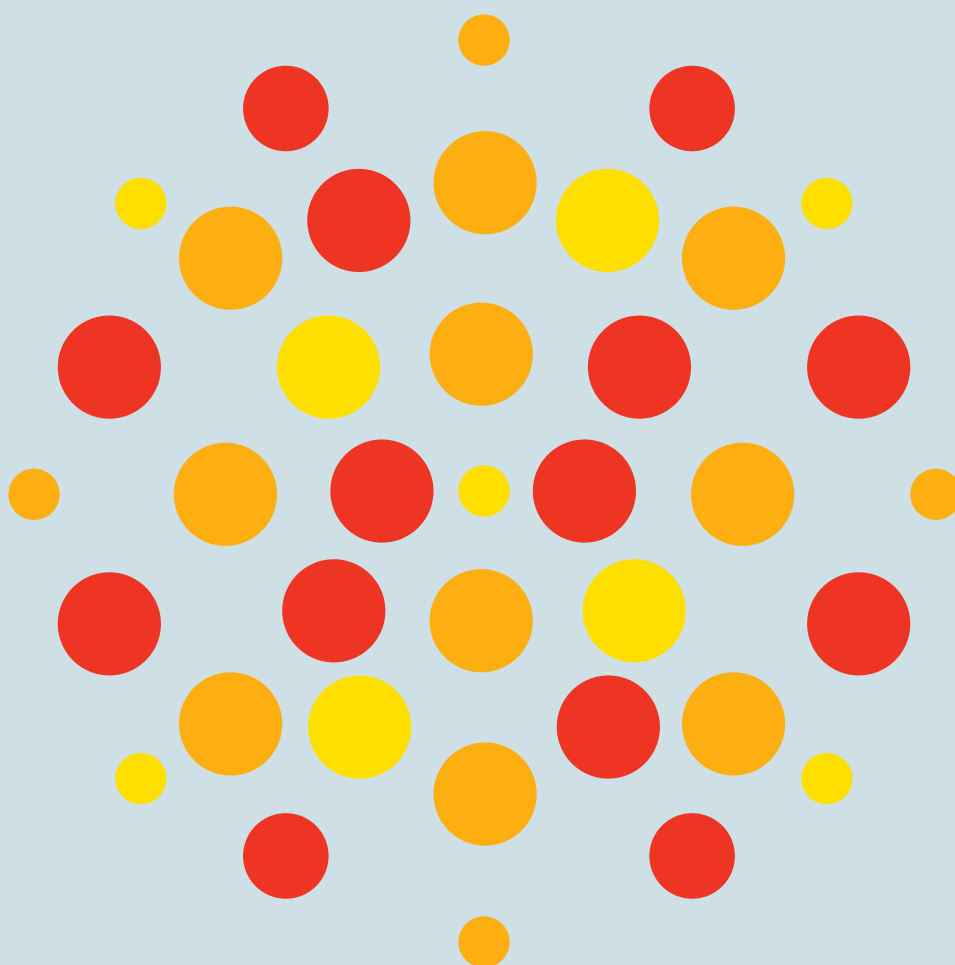


Youth Work Plan 2023–2025

Louth and Meath Education and Training Board



Contents

Foreword	2
Youth Work and the role of Louth and Meath ETB	3
LMETB and the Youth Work Committee	5
Current Youth Work Provision	8
Background, legislative and policy context	9
Funding Streams	11
Cooperation and Inter-agency Working	15
Development of Youth Service Plan	17
Consultation	18
Demographics	24
Plan for Louth Meath ETB Youth Service 2023 – 2025	26
Strategic Goals	27
Implementation and Monitoring	31
Appendix	32



Involve Youth Project Meath UBU receiving their national ETB Excellence in Youth Services runner-up award for the “No Shame Game”, devised and designed by young people at the project.

Foreword

I am pleased to present LMETB's new Youth Work Plan for 2023-2025.

As noted in the Plan, the way Youth Work is delivered nationally has undergone some considerable change since our last plan was presented in 2020.

This Plan was developed as the result of a major Area Profile project, which involved extensive research and consultation with many of the stakeholder and partner organisations in the area, most importantly the young people of Louth and Meath. We are grateful for the cooperation and assistance of these stakeholders to help us include their voices as an integral element in planning our strategic goals.

This document sets out the legislative basis and policy context for the plan and describes in detail the socioeconomic profile of the Louth/Meath region which forms the foundation for it. The methodology which frames the shaping of the plan is also outlined. The plan maps out the current level of youth work services within the Louth Meath region both in terms of provision and funding of services.

LMETB will use the Area Profile process and the actions outlined in this plan to ensure that funding continues for Youth Services so that we can continue to help meet the needs of Young People in Louth and Meath.

Martin G. O'Brien
CEO
Louth And Meath Education and Training Board

I am delighted to introduce the LMETB Youth Work Plan 2023 – 2025. Our young people in Louth and Meath have played a central role in shaping this plan. Their insights have been crucial, ensuring that this plan reflects their real-world experiences and needs.

The “One good adult” concept has been central to our approach and our Youth Workers and Volunteers continue to play a vital role in our communities. Their commitment to our young people's development has been dedicated and transformative.

I extend my thanks to my colleagues on the Youth Work Committee and all the team in LMETB, particularly our Youth Officers, for their guidance and expertise in formulating this plan. Their leadership has been instrumental in setting out a clear and actionable path forward.

Looking to the future, I am optimistic about implementing this plan's actions to benefit the young people of Louth and Meath. It is with a collective sense of purpose that we undertake this task, eager to support our youth and to witness the positive changes that will undoubtedly emerge from our combined efforts and actions.

Councillor Marianne Butler
Chairperson
Youth Work Committee

Acknowledgement:

Louth and Meath Education and Training Board Youth Services are funded by the Department of Children, Equality, Disability, Integration and Youth. This enables LMETB to award Local Youth Club Grants, fund targeted projects and other initiatives for the benefit of young people in the region.



**An Roinn Leanaí, Comhionannais,
Míchumais, Lánpháirtíochta agus Óige**
Department of Children, Equality,
Disability, Integration and Youth

Youth Work and the role of Louth and Meath Education and Training Board

LMETB | Our Mission

Louth and Meath Education and Training Board (LMETB) is committed to excellence and innovation in the education and training of learners through the provision of dynamic services delivered by professional staff.

LMETB serves the communities of counties Louth and Meath, working with its educational partners on contributing to the development and growth of the Louth/Meath region. LMETB aims to be the leading provider of quality education and services for the people of counties Louth and Meath through the management and delivery of a diverse range of accessible, progressive and responsive programmes.

LMETB | Strategy Statement 2022-2026

The Education and Training Boards Act 2013 requires ETBs to prepare a five year Strategy Statement which outlines the objectives of the LMETB Board, the priorities of those objectives and the proposed strategies for achieving the objectives. In LMETB's second Strategy Statement, you will see that we have identified very ambitious strategic goals and actions for our organisation and we are confident that these will build on the tradition of excellence and innovation in education in LMETB.

LMETB's Core Values

- Excellence
- Innovation
- Learner Centred
- Supporting Transition
- Equality
- Inclusion
- Holistic
- Professionalism
- Responsiveness
- Wellbeing
- Fairness
- Integrity
- Partnership & Collaboration
- Value for Money



Louth and Meath Education and Training Board

Louth & Meath Education and Training Board (LMETB) is the largest education and training provider in Louth and Meath, providing a broad range of education and training services to over 30,000 students and learners on an annual basis.

LMETB's provision includes

4 Community National Schools

18 post primary schools including one with PLC provision

3 PLC colleges

8 Youthreach centres

7 multi-use Further Education and Training campus/centres delivering education and training programmes

Regional Skills & Training Centre

Centre for European Schooling

Drogheda College

Advanced Manufacturing Training Centre of Excellence

Youth and Community Education and Training Services in a range of community-based locations

Music Generation programmes

Irish Language provisions

LMETB is also a joint patron of 6 Community Schools at: Ardee, Kells, Trim, Athboy, Ashbourne, and Ballymakenny College, Drogheda.

LMETB manages a budget of in excess of €170 million, serving a population of 323,317 and a staff of approximately 2,400 full-time and part-time personnel across all LMETB services.

LMETB's Further Education and Training (FET) Services offer a diverse range of full-time and part-time education and training opportunities for all individuals over the age of sixteen across a variety of centres, colleges and outreach locations across Louth and Meath.

LMETB covers an area of 3169 km².

LMETB Youth Work Committee and the office of Youth Work

The Youth Work Committee oversees the work of the office of Youth Work within LMETB.

As per the ETB Act, 2013, a Youth Work Committee “supports the provision, coordination, administration and assessment of youth work services in its functional area and provides such information as may be requested by the Minister for Children & Youth Affairs in relation to such support.”

Membership of the Committee includes representatives from the Voluntary Youth Sector and Statutory Bodies (e.g. HSE, An Garda Síochana, Local Authorities, Children’s Services Committees). The committee also includes two young people from Comhairle na nÓg or similar youth structure.

The remit of the Youth Work Committee is to:

1. Be informed of the youth work function conducted by LMETB.
2. Inform the LMETB Board of the information relating to youth work, received by it, from the Executive of LMETB.
3. Provide oversight of LMETB Board youth work function.

See appendix for current LMETB Youth Work Committee membership and Terms of Reference.

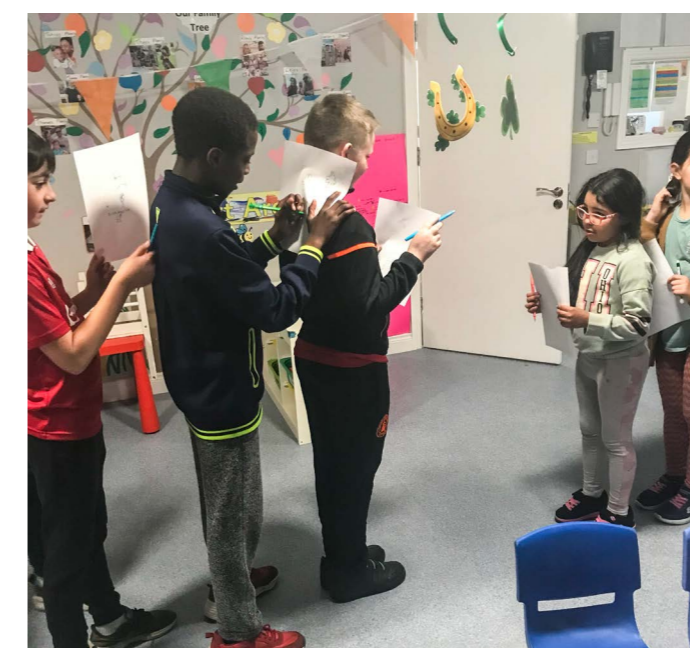
What is Youth Work?

Youth work is a planned programme of non-formal education designed to enhance the personal and social development of young people through their voluntary participation.

Youth work providers are primarily community based and work with young people aged 10 to 24 years.

Youth work helps young people learn about themselves, others and society, through informal educational activities which combine enjoyment, challenge and learning.

Despite the diverse backgrounds of youth service providers in the region, all should strive to deliver a high quality, well-managed and properly resourced youth service.



Such a service would:

- Offer quality support to young people to help them achieve and progress.
- Enable young people to have their voice heard and influence decision making at various levels.
- Provide a diverse range of personal and social development opportunities.
- Help prevent disaffection and social exclusion.
- Be well planned, focusing on achieving outcomes that meet young people’s needs and priorities

Louth Meath Education and Training Board (LMETB) pledges to promote and support a high standard of youth work through the provision, coordination, administration and assessment of youth work services in Louth Meath.

(ETB Act 2013)



A particular focus for LMETB is:

“The needs of young people experiencing, or at risk of experiencing, the poorest outcomes”.

National Youth Strategy 2015 – 2020

LMETB Current Youth Work Provision

- **83** Voluntary Clubs Supported in Communities
- **9** Professional Youth Services Funded via UBU
- Capital Grants for Youth clubs and UBU projects
- Integration Funds
- Specific Project Funds

Total Funding Disbursed During Last 3 Year Plan

€3.401 MILLION

Annual Increase of 23% over course of last plan

Background, Legislative and Policy Context

This Youth Work Plan is significant in that it has been developed following a process of considerable change in youth service provision both nationally and locally, most recently with the establishment of the UBU **Your Place Your Space** funding scheme in 2020. These changes provide for a consistent national approach in the recognition and value of youth work.

ETBs are therefore responsible for the development, administration and governance of youth work services in their functional area. This involves a mix of both staff-led youth services and volunteer-led youth clubs. Funding for the provision of such services is provided to each ETB by Government of Ireland through the Department of Children, Equality, Disability, Integration and Youth (DCEDIY).

A Service Level Agreement has been negotiated between LMETB and the Department of Children, Equality, Disability, Integration and Youth to promote transparency and accountability in the delivery of youth work services in the LMETB functional area.

LMETB will assist youth groups and service providers to develop clear statements about their youth work approaches and methods. The quality of youth work is monitored and evaluated through the process of the National Quality Standards Framework, for both staff and volunteer-led youth groups.

- Youth Work Act 2001
- ETB Act 2013
- Better Outcomes Brighter Futures 2014-2020
- The National Youth Strategy 2015-2020
- Quality Standards in Youthwork
- The National Policy Framework for Children and Young People 2014-2020 (under review)
- EU Youth Strategy 2019 – 2027

National Youth Strategy

Better Outcomes, Brighter Futures (BOBF)

National Vision:

“..... where the rights of all children and young people are respected, protected and fulfilled; where their voices are heard and where they are supported to realise their maximum potential now and in the future.”

The National Youth Strategy 2015-2020 -

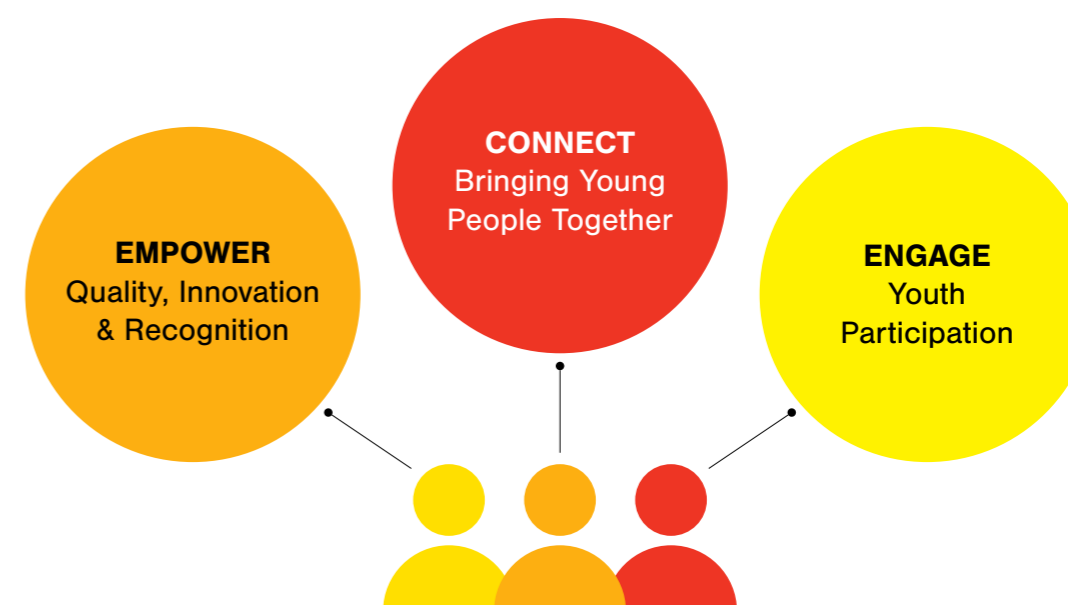
The National Youth Strategy sets out the Irish Government’s aims and objectives in relation to each of the five BOBF national outcomes areas, namely:

- **Outcome 1:** Active and healthy, physical and mental well-being
- **Outcome 2:** Achieving full potential in all areas of learning and development
- **Outcome 3:** Safe and protected from harm
- **Outcome 4:** Economic security and opportunity
- **Outcome 5:** Connected, respected and contributing to their world.

European Context

Irish policy is developed within a wider context which is informed by European Union strategies and frameworks. The most important of these is the EU Youth Strategy 2019 – 2027 which was introduced with the objective of engaging, connecting and empowering young people. It promotes cross-sectoral cooperation and sets out key principles to ensure young people can engage in decision making.

The three objectives of the Strategy are further defined:



Funding Streams

There are two main funding streams for youth work provision;

1. Professional Youth Services - UBU - Your Place Your Space
2. Volunteer led Clubs – Local Youth Club Grant Scheme

LMETB also administers other funding schemes for voluntary and professional groups, for example;

3. Youth Club Equipment Grant
4. UBU Capital Grant
5. Ukraine Integration Grant
6. Minor Grant Scheme
7. Other ad hoc funding schemes

Professional Youth Services - UBU - Your Place Your Space



Professional Youth Services are funded under the UBU Scheme to deliver Youth Work throughout Louth and Meath.

UBU Your Place Your Space is a DCEDIY funding scheme which provides local services for young people. UBU Your Place Your Space was developed in line with recommendations from the Value for Money and Policy Review of Youth Programmes (2014) through the DCEDIY.

UBU Your Place Your Space aligns with the Better Outcomes, Brighter Futures National Policy Framework, the National Strategy on Children and Young People's Participation in Decision-Making, and the LGBTI+ and National Youth Strategies.

UBU is underpinned by the Area Profile, Needs Assessment and Service Requirement (APNASR) process. The APNASR Tool supports each Education and Training Board (ETB) to gather and use available demographic data and local knowledge to produce an area profile of their functional area.

This results in the development of Service Requirements for new or existing projects that are funded by the Department under UBU.

9 Professional (UBU) programmes

- Boomerang, Drogheda
- Southside Community Youth Project, Drogheda (YWI Louth)
- Dundalk Youth Centre
- FAI Football in the Community, Dundalk
- Cox's Demesne Youth Project, Dundalk (YWI Louth)
- Craobh Rua Youth Project, Dundalk (YWI Louth)
- Meath Youth Project, Trim and Navan (Involve Meath)
- Meath Youth Together, Navan (YWI Meath)
- Navan West (YWI Meath)



Strategic Goals of UBUs

Goal 1: Quality Youth Work Provision and Practice. To work with and support youth work providers to deliver a quality service that responds to young people, assists them to achieve their full potential and contributes to their social, cultural and economic development.

Goal 3: Promoting the Importance of Youth Work. To record and promote the value and importance of youth work and create a greater awareness of its impact and potential in the LMETB region.

Goal 2: Strong Governance. To support and monitor good governance in youth work organisations aiding the delivery of quality youth work.

Goal 4: Networking, Connecting and Collaborating. To build positive relationships with our partners and stakeholders and identify opportunities for collaboration to enhance youth work.

Volunteer led Clubs – Local Youth Club Grant Scheme

Volunteer-led clubs provide a very high degree of direct work with young people through youth clubs and projects. The role of the volunteer is central to youth work provision in Ireland and these small clubs are a vital part of Youth work provision throughout Louth and Meath. Louth and Meath ETB is committed to supporting these clubs through the Local Youth Club Grant Scheme (LYCGS) and other supports.

Quality Standards

In 2017, DCEDIY incorporated the National Quality Standards for Volunteer-led Youth Groups (NQSPLYG) into the Local Youth Club Grant Scheme (LYCGS). These national quality standards were developed to support and enhance voluntary work with young people.

The three National Quality Standards for Volunteer-led Youth Groups are:

- **Standard 1: Safety and well-being** – Programmes, practices and people ensure and promote the safety, support and well-being of young people.
- **Standard 2: Young person-centred** – Programmes, practices and people ensure and promote the voluntary participation, inclusion and voice of young people.
- **Standard 3: Developmental and educational** – Programmes, practices and people ensure and promote the development, achievement and progression of young people.

Throughout the club/group year, volunteers progress actions relating to the Standards that will improve the running of the club/group and the experience of the young people attending the club/group.



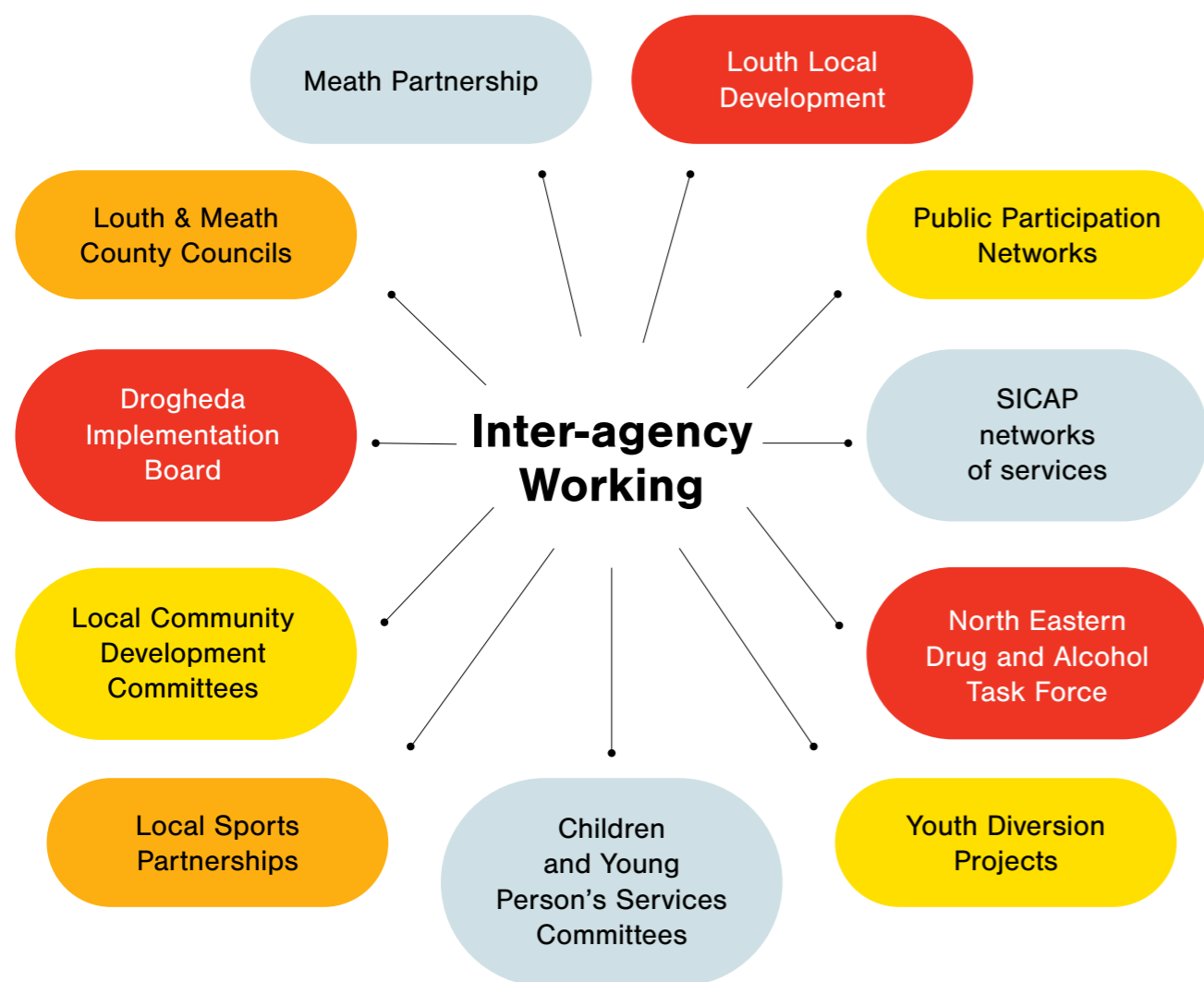
Cooperation & Inter-agency Working

Networking

LMETB and its Youth Services have close working relationships with several key agencies in both Louth and Meath, including the Children and Young People’s Services Committees, Public Participation Networks, SICAP networks of services, Local Community Development Committees and the Drogheda Implementation Board (see below).

Having close relationships with these bodies has clear benefits in terms of policy promotion, demographic statistics sharing and interaction between the LMETB Youth Services unit and other services for young people.

We believe developing effective partnerships and consulting with young people and the agencies working with them improves our response and ultimately leads to better outcomes for young people.



The Drogheda Report, Plan and Board

In 2020 the Minister for Justice commissioned a Scoping Report into Community Safety and Wellbeing in Drogheda ('the Report'), produced by Vivien Geiran a former Director of the Probation Service, in response to concerns about rising levels of crime and fear of crime in the town.

The Report comprehensively addressed the ongoing challenges and needs experienced by communities in Drogheda. A subsequent Drogheda Report Implementation Plan ('the Plan') with 70 actions falling out of the recommendations from the Report was published in July 2021. These recommendations fall under two general headings, the need for improved interagency cooperation in the administration and delivery of services in Drogheda and the need to resource services in the area. The Plan was adopted by cabinet with a commitment to prioritise requests for support aligned to it.

Drogheda Implementation Board was established by Government of Ireland in October 2021 as the coordination structure for the delivery of these actions. Membership of the Board ('the Board') consists of senior decision makers from relevant statutory agencies and community representatives. A full list of members can be viewed here. The Board also consists of a number of subgroups, including a Family Support, Children, Young People and Education group. The Board is hosted by LMETB and supported by the Department of Justice.

Youth Work

The delivery of actions within the Plan since July 2021 has accrued significant benefits to Drogheda's youth and community sectors, including improved interagency cooperation and additional resources for services. As an example, in response to actions 5.3 and 5.5 in the Plan relating to improved coordination of youth services and identification of gaps in service provision for young people, a new LMETB Youth Officer post was secured for the Drogheda area to work alongside LMETB's Louth and Meath youth officers.



Development of the Youth Work Plan For 2023 – 2025

The development of this plan required LMETB Youth Officers to carry out a long and extensive process of review and consultation.

Legislation

The consultation process in developing the plan involved a review of the legislative context and its application to the needs of young people in the LMETB region.

Policy

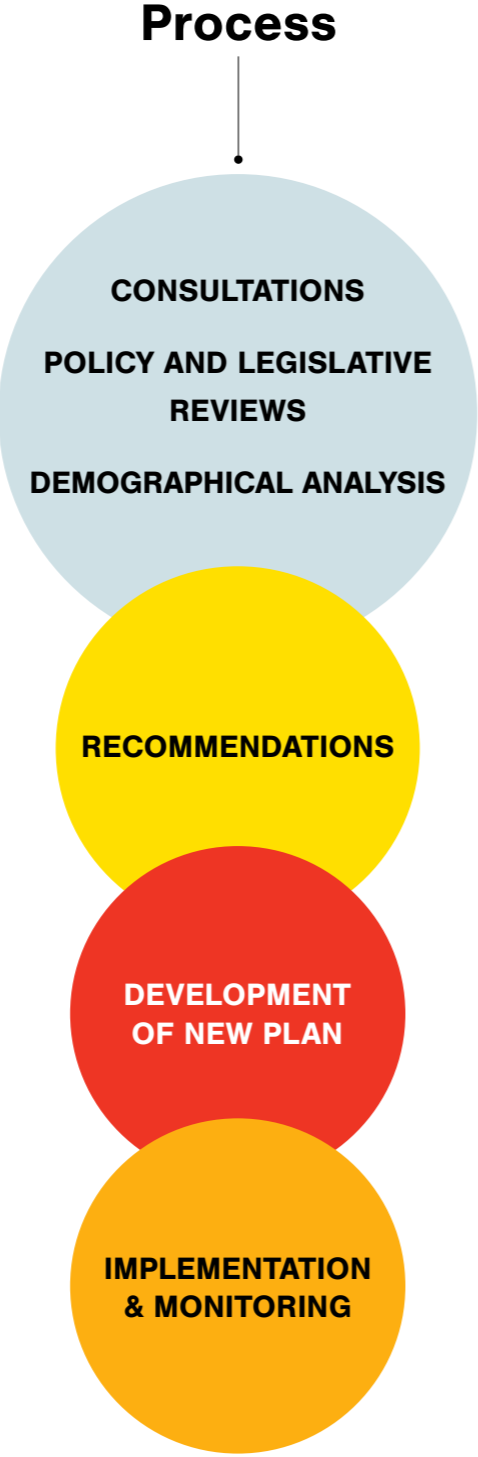
A review of national policy and in particular the outcomes and objectives with respect to young people's needs in Louth and Meath taking into account the context of the function of Youth Services within the mission and core principles of LMETB.

Demographics

A review of the needs of young people as set out in LMETB's area profile. The socio-demographic profile and statement of needs are based on the area profile process and its findings.

Consultations

The consultation process also involved meetings and focus groups with young people directly involved in youth clubs and projects, volunteer youth leaders active in their communities, youth work staff and management from various organizations and members of the Youth Work Committee.



Consultation



The consultation stage was vital in that it ensured that the voices of our stakeholders – especially those of Young People – were at the heart of our planning process.

Methodology

A wide range of Young People, Youth Work professionals and Volunteers were consulted in person to discuss recent successes in their fields, challenges arising to their provision, future developments and any gaps they would identify which are currently existing in their area.



Young Person's Consultation Summary

In-person consultations were held with young people from all over Louth and Meath via their respective Comhairle na nÓg branches. Two focussed consultations were also held with young people in Drogheda in conjunction with Drogheda Implementation Board, with particular emphasis on recent Drogheda-area events and interventions. Using a World Café model, the groups were consulted on the topics of safety, drug and alcohol use, education, employment, youth activities and mental health.

The following statements were raised:

1. Across all consulted groups, Youth Work generally was found to positively impact young people's sense of safety in their areas.
2. Abuse of drugs and alcohol was said to negatively affect young people's sense of safety, their education and their mental health.
3. While negative mental health was seen as a major risk to young people's wellbeing, Youth Work and activities including music, art, events, socialising, integration with the surrounding community, safe relationships with adults and friendships were all seen as helpful factors.
4. Major factors identified as leading to a desirable career in adult life were confidence, supportive adults, remaining in school/finishing education, avoiding involvement with the criminal justice system and not abusing drugs or alcohol.

The young people consulted also identified good career counselling in school and Work Experience as major advantages, and good people skills and self-belief as being key desirable personal traits. Improved communication with decision makers was also identified as a goal.

The young people also identified a key concern around a sense of disconnect with the community – parents' generation would have known everyone in the area – and pointed out that this affects confidence. Covid was seen to have contributed to this a lot and caused further disconnect in mindsets also.

In terms of gap identification, the young people consulted mentioned a need for more youth activities in rural areas or areas of recent population growth, where it was felt the options were sometimes limited to sporting activities. The areas of cookery, art, coding, music and drama were frequently mentioned, as were activities like woodworking and games.

Many participants identified the advantages of safe spaces for young people to congregate; conversely, in other geographical areas the lack of these spaces was identified along with suggestions for more drop-in facilities like a café.

Young people consulted also frequently identified that organised trips to activities like swimming, horse riding and outdoor activities were a real positive.



Professional Consultation Summary

In preparation for the Youth Work Plan and in order to develop a new Area Profile Tool for a new Cycle of UBU funding, LMETB Youth Services conducted a series of consultations with Youth Work organisations who run both professional and voluntary provision under their auspices.

The consultations encompassed recent successes in their respective fields, challenges arising to their provision and any gaps they would identify which are currently existing in their area.

These organisations included Boomerang Youth Café, Youth Work Ireland Meath, Youth Work Ireland Louth, Dundalk Youth Centre and Involve (National Association of Travellers' Centres).

The Youth Officers also consulted with other stakeholder groups active across the two counties who are involved in youth and community provision. **These organisations included:**

Comhairle na nÓg Louth
Comhairle na nÓg Meath
Mosney Community Room
Footsteps Programme
Connect Family Resource Centre
The House, Cox's Demense
Louth Local Sports Partnership
Drogheda Implementation Board
Louth Local Development
North Eastern Regional Drug and Alcohol Task Force

All of the organisations consulted reported significant successes across their fields.

In the case of UBU funded organisations, huge gains have accrued in their respective areas as a result of the successful completion of Cycle 1 of the funding cycle. It was reported across the board that the Target Groups identified in the Service Level Agreements were still relevant and accurately targeted.

The following were identified as areas to consider for future development:

- Young people in direct provision, e.g. Mosney.
- Young Carers.
- Young people living with substance misuse in the household.
- More area-based youth groups (universal provision).
- More tailored and culturally appropriate provision for young Traveller people across the region, including around Traveller Youth Mental Health.
- More targeted provision around the Drogheda drugs feud.
- More work around suicide prevention and aftermath of suicide on remaining family members, adult children, etc.
- Young mothers and young fathers.

- Sourcing of training and CPD.
- Retention of trained Youth Workers in the area.
- Integration of Ukrainian and other young people from diverse cultural backgrounds.
- Expansion of provision around growing residential areas.
- More response to the lack of safe spaces in public areas – away from drug-dealing, intimidation, racism, etc.
- Physical health.
- Geographical spread is a huge issue where transport links are poor.
- Young people with disabilities.
- Young people with ASD.

In the case of the other organisations, the following areas were identified as ongoing challenges to provision and/or opportunities for development:

- Development of a new community and youth facilities in Drogheda North to help develop a sense of identity and value based on sense of place.
- Future-proof areas where residential development is expanding rapidly.
- Youth mental health services are at capacity with a waiting list and no Jigsaw service in the county, although the HSE suicide prevention officer post has been re-established.
- Long-term approach to trauma in the area means that Drogheda could become a trauma-informed town.
- UBU and other services are working to engage more with older young people.
- Taster courses for FET or HE would be helpful – sometimes young people have little knowledge or context beforehand as to what they might or might not like, especially where there is very little family or peer history of engagement in FET or HE.
- Volunteer bases are very small – COVID caused a huge issue here.
- A Network of education and training services across the region as per Drogheda SICAP Youth Services Network would be very beneficial.
- More services for a younger age group as per New Choices in Drogheda, where children are too young for Youthreach.
- For representative youth organisations like Comhairle na nOg, reaching Seldom Heard young people could be facilitated better by developing better links with schools and other agencies, particularly with young people from the Traveller community, young people in direct provision and young people with a range of disabilities.
- In direct provision centres a greater range of sports provision is needed. Boys sometimes have limited options, especially for ages 14/15 upwards. A greater range of interventions and supports around antisocial behaviour, drugs and mental health would also be helpful.
- In the case of the Regional Drug and Alcohol Task Force, information sessions and presentations to key stakeholders have been effective so far and are being expanded across the counties.
- Also in the case of drug and alcohol supports: more focus on prevention could be encouraged in a mainstream school setting, especially around the transition from primary to secondary school, which can see early onset experimentation. This is a stage of a child's development/journey when parents are very engaged.
- The expansion of Planet Youth into Louth and Meath would be hugely beneficial.

Demographics

LMETB covers an area of 3169 km2 with wide variation in demographic, socio-economic and geographic profile. In 2023 LMETB Youth Services completed an extensive Area Profile survey with the most recent demographic data available in order to determine areas of greatest need for targeted youth services.

The most recent 2022 CSO figures show a overall population growth of 8.39% in Louth and 13.22% in Meath since the last Youth Work Plan was drawn up.

Interestingly, the three large towns in the region have all shown a significant 9% increase in population: Drogheda now shows a population of 44,135, Dundalk of 43,112 and Navan of 33,886.

Still a significant factor is the increased sub-urbanisation of south Meath south of the region with, for example, Ashbourne showing a growth of 8%.

The CSO figures as of January 2023 show 10.4% unemployment for persons aged 15-24 nationally. The region's towns in particular have significant areas of high unemployment at the small area level that have remained high in the context of a national economic recovery. This structural/cross generational unemployment has a significant impact on deprivation levels and the need for targeted youth services in these small areas.

There are three main targeted response types as per our Area Profile tool -

- Where clusters of high deprivation arise, there will be a requirement for youth work provision in that cluster of small areas.
- Non-geographic target group youth provision where the regional population requires a specific response.
- Sub-regional provision in large urban areas to provide for dispersed small areas of high deprivation and non-geographic needs where interventions are required.

Total Population aged 10 to 24 - 76,593. This equates to a 9% increase in Youth Population since last Plan.



FACTORS INFLUENCING YOUTH DEMOGRAPHICS



Highest Youth Populations:

DROGHEDA

NAVAN

DUNDALK

21%

of Louth Meath population is between 10-24



Rise of

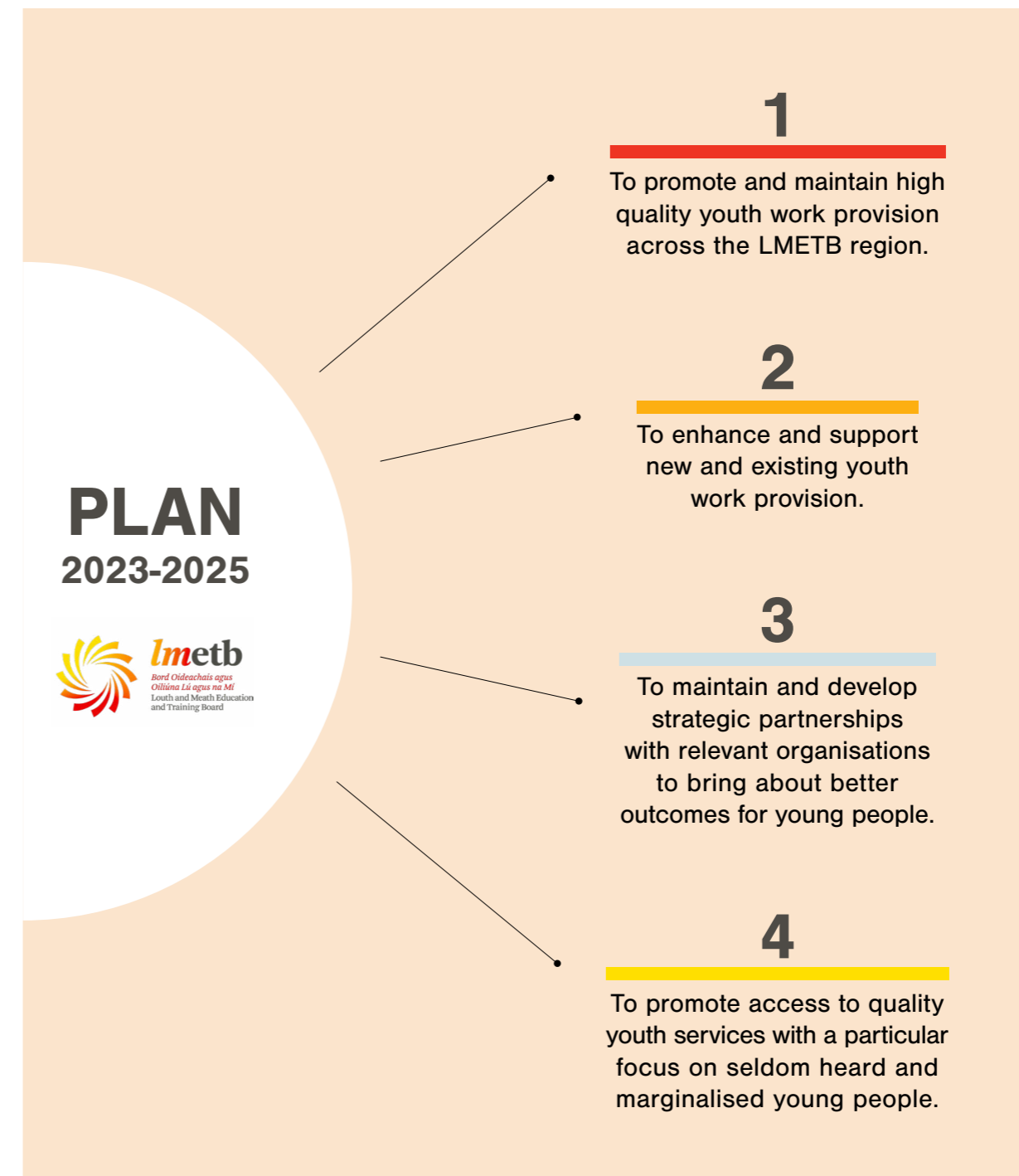
9%

in Youth Population since last Plan



Plan for Louth Meath ETB Youth Service 2023–2025

The process of development culminated in the analysis and recommendations which informed the new LMETB Youth Work Plan 2023 -2025 and led to the development of a set of 4 Goals.



Goal 1

To promote and maintain high quality youth work provision across the LMETB region



Method

Delivering on the existing structures available to us via the Department of Children, Equality Disability, Integration and Youth, ie.

UBU programmes for professional youth work delivery.

Local Youth Club Grant Scheme for volunteer-led youth work delivery.

Other grant schemes.

These programmes have in-built quality and performance oversight structures which we will continue to engage in while supporting youth work organisations to avail of all available resources.

Evidence of Need

The Area Profile Tool which LMETB developed towards UBU Cycle 2 funding has accurately identified target groups and service requirements which reflect the various needs across the two counties.

These findings are supported by the consultations engaged in with young people and stakeholder groups.

Goal 2

To enhance and support new and existing youth work provision



Method

Maintaining and deepening voluntary sector engagement via greater on the ground communication and support in the areas of administration and training.

Broadening the relationship of both professional and volunteer-led youth services with LMETB by identifying areas of new and existing LMETB provision which can enhance service delivery and youth worker knowledge and skills bases.

Evidence of Need

Consultation and ongoing performance evaluation processes with current youth work providers has consistently identified enhancement of current skills bases as a recurring need.

Drogheda Implementation Plan has identified a specific need around training and development of youth workers.

Goal 3

To maintain and develop strategic partnerships with relevant organisations to bring about better outcomes for young people.

Method

In many cases effective strategic partnerships already exist in our networks, but there is greater capacity to develop these relationships into co-led actions. This also leads to greater potential for gap identification.

Evidence of Need

Consultation phase of the research for this plan among other stakeholders in the area has consistently underlined the positive results around increased interagency cooperation.

National legislation supports the direct relationship between LMETB and other stakeholder agencies like CYPSC, PPN, SICAP, etc.

One of the goals of the Drogheda Implementation Plan has been improved interagency cooperation, the benefits of which are already apparent via deeper relationships and increased resources to the area.

Goal 4

To promote access to quality youth services with a particular focus on seldom heard and marginalised young people.

Method

Accurate targeting of UBU programmes.

Continued gap identification via research, networking and active relationships in the community.

Continued and enhanced inclusion of the voice of the young person informing the work of the Youth Work Committee and LMETB's Youth Services function in general.

Training of Youth Services staff in Tusla Children and Young Person's Participation programme.

Evidence of Need

A particular focus for LMETB will be **“the needs of young people experiencing or at risk of experiencing the poorest outcomes”** (*National Youth Strategy 2015-2020*).

Our extensive Young Persons consultation process to develop our Youth Work Plan and Area Profile Tool consistently underlined areas in which young people felt marginalised, seldom heard or left out of mainstream provisions on foot of their age, mental health, sexuality, disability, ethnicity, perceived social background or status as a carer in the home. Access to transport and a sense of safety were also cited as blocking factors.

Using these consultations along with detailed demographic and statistical research, the new Area Profile Tool has identified specific target groups and service requirements to guide professional youth work organisations to meet these needs. These groups target engagement with young people throughout the two counties who are at risk from intergenerational unemployment, antisocial behaviour and crime and substance misuse.

Implementation and Monitoring

In line with its terms of reference, LMETB Youthwork Committee will make recommendations to the LMETB Board on the performance of its statutory youth work functions including in relation to the implementation of the Youth Work Plan.

Certain actions in the plan are executive functions of LMETB and will therefore be monitored in the normal course of business.

Other actions have been identified as ones which are collaborative in nature requiring input and work with identified organisations and agencies.

Appendices

1. Acknowledgements
2. Current professional UBU programmes in Louth and Meath
3. Volunteer led clubs currently supported under the Local Youth Club Grant Scheme
4. Youth Work Committee membership and Terms of Reference
5. Sources of information/research for the LMETB Youth Work Plan 2023 – 2025
6. Further socio-demographic information



APPENDIX 1.

Acknowledgements

We would like to thank the following, who have contributed greatly to this plan:

The leaders and membership of Comhairle na nÓg Louth and Meath who gave so generously of their time for consultations

The young people of Drogheda who took part in our joint consultations with Drogheda Implementation Board and Gráinne Berrill, Hayley Cunningham and Luke Healy for their help in organising and facilitating these sessions

All of the youth and community organisations listed as participants in the Consultations section and our partner organisations whose work helped broaden our research

The senior management team of LMETB and members of the Coordination Group

LMETB Youth Work Committee

LMETB Youth Services team

APPENDIX 2.

Current professional UBU programmes in Louth and Meath

UBU Projects Louth

Boomerang Youth Café

62 Fair Street
Drogheda
Co Louth

Contact:

Michelle Ewetade
041 9839916
michelle@boomerangcafe.ie

Boomerang Youth Café provides a safe space in the heart of Drogheda for young people between the ages of 10-18 years old living in the Greater Drogheda Area. We provide support for our young people together with recreational and educational opportunities. We are open Tuesday to Friday until 8pm and 10pm every other Friday evening, and on Saturday afternoon. We have a dedicated and committed youth team with a broad range of skills and experience. Boomerang Café is a great place for young people to come along and get involved in a host of fun activities including music, song writing, performing, art, gaming, cooking, crafts, sports to name but some of the activities that we facilitate. We also provide a chilled-out space for hanging out with friends, watching TV, listening to music, or using the internet. We are always actively seeking opportunities to bring young people into our services to connect them with services and supports. We are committed to providing an excellent service to our young people whatever their needs.

Cox's Demesne Youth Project (YWI Louth), Dundalk

Coxes Demesne Youth & Community Project 16 Oakland Park, Dundalk, Co. Louth A91 AN25

Toberona Youth Project, Riverwell Community Centre, Toberona, Dundalk Co, Louth A91CH24

Lios Dubh Youth project, Mini Minds Preschool, Park Hall, Coulter Place Dundalk, A91 E82N

Contact:

Caroline Flanagan
0429338323/ 0872590104
caroline@lyf.ie

We work with young people in Dundalk North West through a rights-based, youth-led approach to foster learning, innovation, hope and high expectations in young people, their families, and their community. Our vision is of a world full of possibilities for all young people. Our youth Project based in Coxes Demesne, Toberona and Armagh road are friendly, open, and inclusive of young people and we work hard to meet our members where they are at, and to build relationships of trust, friendship, and equality. We value our young people and Youth Work. Our integrated youth work model means that members of our UBU have access to a range of opportunities and supports, both in a group and one to one basis.

Craobh Rua Youth Project (YWI Louth), Dundalk

Craobh Rua Community Youth Project, 36 Doolargy Ave, Muirhevnamor, Dundalk, Co, Louth A91 N728

Contact:

Caroline Flanagan
0429338323 / 0872590104
caroline@lyf.ie

Youth Work Ireland Louth work with young people aged (10-24years) in the Dundalk- South East area through a rights-based, youth-led approach to foster learning, innovation, hope and high expectations in young people, their families, and their community. Our vision is of a world full of possibilities for all young people. Our Dundalk - South Youth Project based in Muirhevnamor is friendly, open, and inclusive of young people and we work hard to meet our members where they are at, to build relationships of trust, friendship, and equality.

We value our young people and Youth work. Our integrated youth work model means that members of our UBU have access to a range of opportunities and supports, both in a group and one to one basis.

<p>Southside Community Youth Project (YWI Louth) Drogheda</p> <p>Respond Community Building Rowan heights Drogheda A92 RH72</p> <p>Contact: Caroline Flanagan 0429338323/ 0872590104 caroline@lyf.ie</p> <p>Youth Work Ireland Louth work with young people aged (10-24years) in the Drogheda – Southwest area through a rights-based, youth-led approach to foster learning, innovation, hope and high expectations in young people, their families, and their community. Our vision is of a world full of possibilities for all young people. Our Drogheda South West Youth Project based in Rowan Heights is friendly, open, and inclusive of young people and we work hard to meet our members where they are at, to build relationships of trust, friendship, and equality.</p> <p>We value our young people and Youth work. Our integrated youth work model means that members of our UBU have access to a range of opportunities and supports, both in a group and one to one basis.</p>	<p>Dundalk Youth Centre</p> <p>Roden House, Roden Place, Dundalk, Co Louth A91X3TF</p> <p>Contact: Kevin Moran 0429329532 kevin@dundalkyouthcentre.ie</p> <p>Dundalk Youth Centre provides a youth led professional youth service for young people 10-18 years in Dundalk and surrounding areas. Through targeted services, co-designed developmental programmes and access to a safe environment young people feel safe to engage, participate and develop their Communication skills, Confidence and Agency, Planning and Problem Solving, Relationships, Creativity and Imagination and Resilience and Determination.</p> <p>Our specific targets are young people at risk of engagement in Antisocial Behaviour and Crime, at risk of Substance Misuse and those at risk due to Mental Health Issues.</p>	<p>FAI Dundalk</p> <p>DKIT Sport Inner Relief Road, Marshes Upper, Dundalk, Co. Louth</p> <p>Contact: Mick Neville / Paul Burke 0866095436 michael.neville@fai.ie</p> <p>Young people engaged in these football specific programmes will be provided with opportunities to develop in the 7 personal and social development outcomes: Communication skills, Confidence, and agency, Planning and problem-solving, Relationships, Creativity and imagination, Resilience, and determination & Emotional intelligence.</p>
---	---	--

<h2 style="text-align: center;">UBU Projects Meath</h2>		
<p>Meath Youth Together (YWI Meath), Navan</p> <p>St Mary's Church Grounds Trimgate street Navan Co Meath C15NXC9</p> <p>Contact: Geraldine Hogarty 046 9093402</p> <p>Meath Youth Together is the UBU Your Place Your Space service within Youth Work Ireland Meath. We work with young people aged 10 to 24, providing a range of social and educational activities and specific programmes. In partnership with young people, we ensure that our services are in the best interests of the youth we represent. Specific programmes are designed to cater for target groups and individuals or to deal with particular issues affecting young people and their communities, these could include issues of integration, cultural challenges, educational challenges, sexual health, mental health etc. In our daily business we work in conjunction with a variety of agencies to address the needs of young people.</p> <p>Our Meath Youth Together service is based in Navan, but we endeavour to meet young people where they are at with the goal of building trusting relationships.</p>	<p>Meath Youth Project (Involve Meath), Trim and Navan</p> <p>Castlemeadows, Trim, Co Meath C15 FN36 (Office & youth club)</p> <p>Unity Centre, Dunloe Drive, Navan Co Meath C15 FND1</p> <p>Contact: Billie Morgan 086-0785560 youthprojectmeath@involve.ie</p> <p>INVOLVE recognises the equality of the Traveller Community by providing programmes, initiatives and services that promote the participation and inclusion of the Traveller Community in Irish Society. Involve Youth Project Meath operates a youth service in Co. Meath in the towns of Navan and Trim. Providing culturally appropriate activities and programmes to young people aged 10 to 20 years of age from the Travelling Community. Operating 15 groups weekly over evenings and weekends, connecting with more than 80 young people from the Travelling community each week. These programmes include Culture, European Youth Exchanges, Art and Crafts, sports, Healthy Eating, Healthy Wellbeing etc. We also provide supports for young people in the NEET (Not in Education Employment or Training) category.</p>	<p>Navan West (YWI Meath)</p> <p>St Mary's Church Grounds Trimgate street Navan Co Meath C15NXC9</p> <p>Contact: Geraldine Hogarty 0469093402</p> <p>Navan West Youth is the UBU Your Place Your Space service within Youth Work Ireland Meath. We work with young people aged 10 to 24, providing a range of social and educational activities and specific programmes. In partnership with young people, we ensure that our services are in the best interests of the youth we represent. Specific programmes are designed to cater for target groups and individuals or to deal with particular issues affecting young people and their communities. These could include issues of drugs or alcohol misuse, economic/social disadvantage, lack of confidence, lack of direction, sexual health, mental health etc. In our daily business we work in conjunction with a variety of agencies to address the needs of young people.</p> <p>Our Navan West Youth service is based in Navan but we endeavour to meet young people where they are at with the goal of building trusting relationships.</p>

APPENDIX 3.

Volunteer led clubs currently supported under the Local Youth Club Grant Scheme

Club Name	Affiliation
LOUTH	
Autism Support Louth	INDEPENDENT
Ballapousta Foróige Club	Foróige
Ballsgrrove Youth Club	YOUTH WORK IRELAND, LOUTH
Blackrock Youth Club	YOUTH WORK IRELAND, LOUTH
Carlingford Youth Club	YOUTH WORK IRELAND, LOUTH
Drogheda Brass Band	INDEPENDENT
Drogheda Chess Academy	INDEPENDENT
Drogheda Games Club	INDEPENDENT
Drogheda Youth Initiatives Club	YOUTH WORK IRELAND, LOUTH
Guides Boyne Valley	IRISH GIRL GUIDES
Guides Clogherhead	IRISH GIRL GUIDES
Guides Cu-Chulainn	IRISH GIRL GUIDES
Guides Dundalk Senior	IRISH GIRL GUIDES
Guides Glyde	IRISH GIRL GUIDES
Guides Knockbridge	IRISH GIRL GUIDES
Guides Millmount	IRISH GIRL GUIDES
Guides Tullyallen	IRISH GIRL GUIDES
Kilkerley Guides	IRISH GIRL GUIDES
Lourdes Youth Choir	INDEPENDENT
Louth Village Youth Club	YOUTH WORK IRELAND, LOUTH
Lucht Siuil Oga	YOUTH WORK IRELAND, LOUTH
Monasterboice Guides	IRISH GIRL GUIDES
Kilcurry Macra na Feirme na Feirme	Macra na Feirme na Feirme
Macra na Feirme Termonfeckin	Macra na Feirme
Macra na Feirme Tullyallen	Macra na Feirme
Ogras Dun Dealgan	Ógras
Order Of Malta Drogheda	Order of Malta
Reaghstown Youth Club	YOUTH WORK IRELAND, LOUTH
Order Of Malta Dundalk	Order of Malta
Saint Kevin's Youth Club	Foróige
Scoriocht Lannleire	INDEPENDENT
Scouts 2 Blackrock	Scouts Ireland
Scouts 5 Buíon Setanta	Scouts Ireland
Scouts 3 Louth	Scouts Ireland
Scouts 7 Louth	Scouts Ireland
Scouts 8 Slieve Foy	Scouts Ireland
Scouts 1,2,5 St Patrick's	Scouts Ireland
Scouts 14 St Martins Drogheda	Scouts Ireland
St Olivers 3,4,6 Louth	Scouts Ireland
St. Fechins Foróige Club	Foróige
M.A.D Youth Theatre	Youth Theatre Ireland/NAYD
MEATH	
Act Out Youth Theatre	Youth Theatre Ireland/NAYD
Comhaltas Ceoltoirí Eireann Dunboyne	Comhaltas Ceoltóirí Éireann
Cula Bula YC Trim	YOUTH WORK IRELAND, MEATH

Duleek Foróige	Foróige
Enfield Rathmolyon Youth Steering Group	INDEPENDENT
Enfield Youth Club Freaky Fridays	YOUTH WORK IRELAND, MEATH
Guides Cealla Unit	IRISH GIRL GUIDES
Guides Duleek (Plumtree Brownies)	IRISH GIRL GUIDES
Guides Dunshaughlin	IRISH GIRL GUIDES
Guides Loughcrew	IRISH GIRL GUIDES
Kells Angels Youth Club	INDEPENDENT
Kells Foróige Youth Cafe	Foróige
Kentstown & Seneschalstown Accordion Band	INDEPENDENT
Killegland Guides Ashbourne	IRISH GIRL GUIDES
Macra na Feirme Athboy	Macra na Feirme
Macra na Feirme Enfield	Macra na Feirme
Macalla Girl Guides Trim	IRISH GIRL GUIDES
Mosney Foróige	Foróige
Mosney Guides	IRISH GIRL GUIDES
Moylagh Community Centre	INDEPENDENT
Moylagh Foróige	Foróige
Moynalty Macra na Feirme	Macra na Feirme
Navan Girl Guides	IRISH GIRL GUIDES
Navan Silver Band	INDEPENDENT
Navan Youth Club	YOUTH WORK IRELAND, MEATH
Oldcastle Foróige	Foróige
Ratoath Foróige	Foróige
Scouts 1 Meath Dunboyne	Scouts Ireland
Scouts 11 Meath Kilcloon	Scouts Ireland
Scouts 21 Meath Kentstown	Scouts Ireland
Scouts 5 Meath Kells	Scouts Ireland
Scouts 6 Meath Ashbourne	Scouts Ireland
Scouts 7 Meath Dunshaughlin	Scouts Ireland
Scouts 17 Meath Longwood	Scouts Ireland
Scouts 2 Meath Trim	Scouts Ireland
Slane Foróige Youth Café	Foróige
Stackallen & Rathkenny Musical Society	INDEPENDENT
Syddan Foróige Youth Club	Foróige
TAG Meath Autism Group	YOUTH WORK IRELAND, MEATH
Trim CoderDojo (TFRS)	INDEPENDENT
Trim Youth Club	YOUTH WORK IRELAND, MEATH
Wilkinstown Macra na Feirme	Macra na Feirme
1st Meath Navan Scouts	Scouts Ireland
Scouts 16 Meath Kildalkey	Scouts Ireland
Scouts 14 Meath Kilbride	Scouts Ireland
Ratoath Rockets	INDEPENDENT

APPENDIX 4.

LMETB Youth Work Committee 2023

Cllr Marianne Butler (Chairperson)	Louth County Council
Cllr Maria Murphy	Meath County Council
Cllr Kevin Meenan	Louth County Council
Graham Russell	Louth County Council
Jennifer Darcy	Project Worker, School Completion Programme, Beaufort College, Navan
Geraldine Hogarty	Regional Director – Youth Work Ireland Meath
Clodagh O'Mahony	Cox's Demesne – Youth Work Ireland Louth
Leonard Callaghan	Co-Ordinator, Meath Children and Young People's Services Committee
Sheola Boshell	Young Person Representation – Comhairle na nÓg – Meath
Elizabeth Gillen	Young Person Representation – Comhairle na nÓg – Louth

LMETB Youth Work Committee Terms of Reference

A Youth Work Committee will be established by Louth and Meath Education & Training Board in accordance with Section 10 of the Education & Training Boards Act 2013 ('the Act') which sets out the functions of each Education and Training Board ('ETB').

The youth work function for an ETB is provided for in subsection (j), namely to: **“support the provision, coordination, administration and assessment of youth work services in its functional area and provide such information as may be requested by the Minister for Children & Youth Affairs in relation to such support.”**

A Youth Work Committee may be established by the ETB in accordance with Section 44 of the Act. Louth and Meath Education & Training Board has, on the 19 July 2018, established the Louth and Meath Education & Training Board Youth Work Committee, and approved Terms of Reference for the Committee.

Chairperson

A member of Louth and Meath Education & Training Board is to be appointed as the Chairperson of Louth and Meath Education & Training Board Youth Work Committee on the above date, pursuant to the powers of the ETB, as set out in section 44(4) of the Education & Training Board Act 2013.

These updated Terms of Reference for the Louth and Meath Education & Training Board Youth Work Committee on the above date, in line with the board's powers under section 44(1) and are signed hereunder by the Chairperson of Louth and Meath Education Training Board as verification of their approval by the Board on 21 November 2019

Duties of Committee

The remit of the Youth Work Committee is to:

1. Be informed of the youth work function conducted by Louth and Meath Education & Training Board.
2. Inform Louth and Meath Education and Training Board of the information relating to youth work, received by it, from the Executive of Louth and Meath Education & Training Board.
3. Provide oversight of Louth and Meath Education & Training Board youth work function.

The Youth Work Committee does not and shall not fulfil any executive functions of the Education & Training Board as these are within the remit of the Chief Executive and/or his/her delegates.

Membership of ETB Youth Work Committees

A Youth Work Committee shall have no more than 12 members, pursuant to section 44(2) of the Act. Louth and Meath Education & Training Board Youth Work Committee shall consist of 12 members. Membership may consist partly of members of the Education & Training Board and partly of members who are not members of that board but whom are appointed by Louth and Meath Education & Training Board.

Removal of Members

A member of the committee may be removed from office at any time by the Education and Training Board, in line with section 44(13) of the Act. The Education and Training Board may also dissolve the committee at any time, as provided for under section 44(15).

Regulation of Meetings

The quorum for the Louth and Meath Education & Training Board Youth Work Committee shall be 5. Meetings of the Louth and Meath ETB Youth Work Committee will be held a minimum of once and no more than four times per annum.

Meetings will follow a pre-determined agenda and will be agreed between the Chairperson of the Committee and the Executive. Same should be circulated to all Committee members up to 7 days in advance of each meeting.

Term of Office of Committee

The term of office of Louth and Meath ETB Youth Work Committee shall be 5 years. These Terms of Reference shall be issued to the Chief Executive of Louth and Meath Education & Training Board and to the Chairperson of the LMETB Youth Work Committee on the next business day after the board's determination herein.

APPENDIX 5

Sources of information/research for the LMETB Youth Work Plan 2023 – 2025

Aside from the consultation stage outlined earlier in the Plan, the following sources of information were used for our Area Profile research for Louth and Meath:

Census and Pobal Data
Health Research Board Data on Drug Cases
TUSLA Service Performance Report
SUST Annual Report
Louth Leader Partnership Annual Report
Leader in Meath Development Programme
Annual Reports Garda Diversion
Drogheda: Creating a Bridge to a Better Future; Scoping Report into Community Safety and Wellbeing in Drogheda
Drogheda Report Implementation Plan
Meath CYPSC Children and Young Peoples Plan
Louth CYPSC Children and Young Peoples Plan
OECD Policies for Social Inclusion Ireland
DCYA Direct Provision Consultation
LGBTI+ National Youth Strategy
SICAP Social Inclusion Analysis Meath and Louth
Reception and Integration Agency Dep. of Justice report
Health Research Board Data on Drug Cases 2018
Co Louth Local Economic and Community Plan 2016-2022
Co Meath Local Economic and Community Plan 2016-2021
Co Louth Development Plan

APPENDIX 6

Further socio-demographic information

Despite the overall fall in unemployment figures nationally, according to Pobal's most recent Deprivation Index (2022), "in relative terms, the geographic distribution of disadvantage and affluence remains largely the same, with persistently high levels of disadvantage in some areas ... these areas are increasingly disadvantaged in relative terms."

In both Louth and Meath, electoral area data can mask the figures for deprivation as they are too large and contain areas of affluence.

29 small areas in Louth are classified as "Very Disadvantaged". The vast majority are located in the two major towns of Drogheda (7 small areas) and Dundalk (20 small areas). Ardee and Dunleer have one area designated as "Very Disadvantaged" each. These clusters of small areas are always surrounded by "Disadvantaged" areas where numbers of young people are above regional average or there are high lone parent numbers and dependents both occurring together.

In addition, there are now 6 small areas in Louth classified as "extremely disadvantaged" since the last Youth Work Plan was published – 4 of these are in Drogheda and 2 in Dundalk.

As per Louth, Meath's electoral area data masks the county's deprivation figures. There are 13 small areas in Meath which are classified as "Very Disadvantaged". 7 of these are located in the Navan area, and newly identified areas in this category have now sprung up in Duleek, Laytown, Bettystown and Oldcastle. Trim and Kells are consistently "Disadvantaged".

As per Louth, these clusters of small areas sit within "Disadvantaged" areas where numbers of young people are above regional average or there are high lone parent numbers and dependents both occurring together.

The LMETB region has a youth population (ages 10-24) of 76,593 which is 21% of the area's total population of 360,529.

The rapid growth of Drogheda into East Meath and the projected growth of North Drogheda (20,000 projected increase in population) with the Cross Route development will put considerable pressure on services in an area which already has specific difficulties.

