



PROMETHEAN TOOLS AND ACTIVITIES

ABSTRACT

In this handout you will find some helpful tips and tricks that we covered in training and also some troubleshooting tips for you to use.

David O' Connor
LMETB

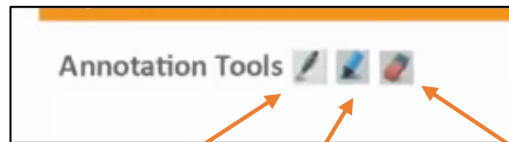
Table of Contents

Annotation Tools.....	2
Pen.....	2
Highlighter.....	2
Eraser.....	3
.....	3

This handout will give you some information on some of the Tools and Activities associated with your Promethean ActivBoard.

We will take a look at your main toolbox and some of the associated tool in it and also at some of the activities that will be possible while using them. Remember though that you can use your finger just as well as the pen for any and all of these functions.

Annotation Tools.



The annotation tools in your main toolbox are your Pen, Highlighter and Eraser

Pen.

The primary tool that you will use when writing on your board will be your pen tool.



You can also adjust the pen width using the slider indicated or by clicking on the presets just above the slider.

to adjust pen width

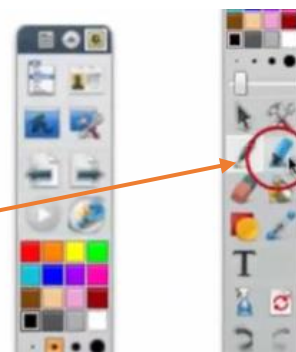


To change the colour of the pen you simply click on the colour that you would like on the colour palette in the main toolbox as indicated in this image.



Highlighter.

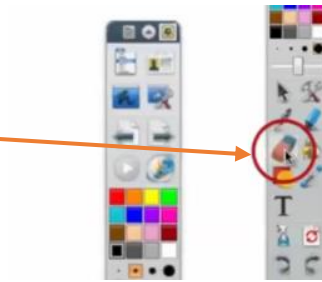
The Highlighter tool works in the exact same way, Click on the Highlighter, beside your pen tool, choose your colour from the palette, change the width of the line if required and then simply use your finger or pen to highlight the appropriate area.



Eraser.

The Eraser is an essential tool for any teacher and there is one in your main toolbox. It looks like an old eraser from school and if you click on it you can use your pen or finger to erase from the board.

The width of the eraser can be changed with the same slide bar as before.



IT Helpdesk

IT Helpdesk

IT Helpdesk

IT Helpdesk

IT Helpdesk