

Introduction to the Schools Directorate



I am delighted to introduce the Louth and Meath Education and Training Board (LMETB) Schools Directorate Directory of Schools and Colleges along with answers to some frequently asked questions about our LMETB Schools and Colleges.

We hope that this Directory will give you an insight into LMETB's role as the largest comprehensive educational provider in counties Louth and Meath.

To our current parents/guardians, thank you for choosing LMETB to be the education provider for your son/daughter. Please continue to liaise with your local school to ensure the best educational outcomes for your son/daughter as they progress through their primary and post primary education with us.

To our prospective parents/guardians and students we invite you to look at our schools across the two counties and visit the school websites to find out more about each individual school. If you wish to schedule a meeting to find out more about any of our schools, please contact the school to schedule an appointment. You will receive a very warm welcome.

I would like to wish all of our School Leaders, students and staff continued success in our Schools and Colleges. I would like to congratulate you all on our collective achievements to date and to thank our staff for their professionalism, commitment, dedication and support over the years which has resulted in LMETB gaining a reputation as leading education provider across the region from primary to post primary to further education and training.

Le gach dea – ghuí oraibh go léir.



Fiona Ní Chaoindealbháin
Stiúrthóir Scoileanna, BOOLM

Fiona Kindlon
Director of Schools, LMETB





Who are Louth and Meath Education and Training Board (LMETB)?

LMETB is the largest comprehensive educational provider in the Louth and Meath region with a range of educational services from primary to post primary and further education and training. LMETB is committed to excellence and innovation in the education of young people and adults through the provision of dynamic services delivered by professional staff. We are proud to serve the communities of counties Louth and Meath, work with our educational partners and other agencies within our communities and nationally to contribute to the continued development and growth of CNS and Post Primary education services in the Louth/Meath region.

How many Schools and Colleges do LMETB have in counties Louth and Meath?

The Schools Directorate LMETB has responsibility for LMETB's 4 Community National Schools, 18 Post Primary Schools and the Centre for European Schooling which is located in Dunshaughlin, Co. Meath. LMETB are also joint patron for six post primary schools across counties Louth and Meath.

How many new Schools and Colleges has LMETB opened in the last few years?

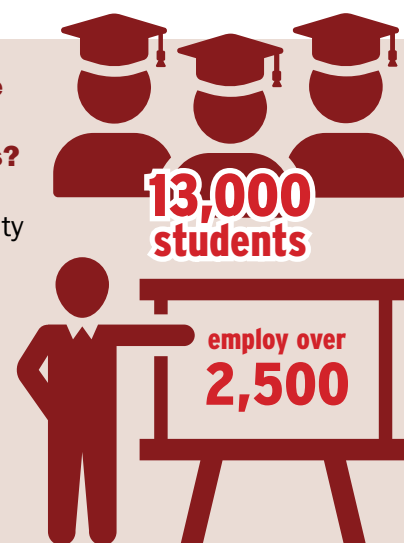
LMETB has opened a total of five new schools, three Community National Schools and two Post Primary Schools since 2018. Faughart Community National School opened in September 2018, Ashbourne Community National School opened in September 2019, Enfield Community College and Dunshaughlin Community National School opened in September 2020 and Coláiste Ríoga, Dunshaughlin opened in September 2021.

How many students attend LMETB's 22 primary and post primary schools?

At present we are providing primary and post primary education for over 13000 students in Counties Louth and Meath.

How many people are employed in LMETB Schools and Colleges?

LMETB employs over 2500 people the majority of whom work as Teachers, Special Needs Assistants (SNAs), Administration, Caretaking and Cleaning staff in our CNS and Post Primary Schools.



What is the LMETB School Experience?

The LMETB school experience is one where students feel a sense of belonging and develop a love of learning through a positive and happy school experience. LMETB expect all members of the school community to treat one another with respect. Our schools promote high standards of behaviour centred on respect including respect for self, staff, other students, visitors to the school and respect for property. Students are motivated and provided with opportunities to become active and responsible participants in their own learning. Our school communities work with all partners and stakeholders to prepare knowledgeable and socially responsible citizens for the future. The Department of Education Inspection and Evaluation team continue to highlight the very positive rapport that exists between students and staff in our schools and colleges.





Do LMETB Schools and Colleges have a School Uniform? LMETB students wear a school uniform as we are of the firm belief that this gives students a sense of belonging to a particular school and creates an identity for any new LMETB school in the community.

What Department of Education Programmes are on offer in LMETB Schools and Colleges? Students attending our schools have access to the full suite of Department of Education programmes and a diverse range of co-curricular and extra-curricular activities. Department of Education Programmes include the Junior Certificate, Junior Certificate Schools Programme (JCSP in DEIS Schools only), Transition Year, Leaving Certificate, Leaving Certificate Applied and the Leaving Certificate Vocational Programme

What Teaching, Learning and Assessment Methodologies are utilised in LMETB Schools and Colleges? The curriculum on offer in LMETB schools and colleges comprises a range of active teaching, learning and assessment methodologies which are differentiated to meet the needs of students. Opportunities to bring the curriculum to life are provided within the classroom and in the provision of a broad and diverse range of co-curricular, extra - curricular activities and themed weeks.

Are LMETB committed to supporting teacher Continuing Professional Development? In LMETB we have a strong focus on Continuing Professional Development in our schools to ensure that teaching, learning and assessment at our schools is up to date and at the highest standard possible. Our teaching and support staff regularly attend CPD facilitated by the National Support Services of the Department of Education. Teaching and support staff also engage in CPD at school level through pilot projects and guest speakers to the school.

Have LMETB Schools and Colleges up to date buildings and ICT infrastructure? LMETB School Buildings are modern, bright, spacious and well resourced with state of the art ICT infrastructure and Digital Technologies.

What supports are provided for students attending LMETB Schools and Colleges? Care for students is a major priority for students attending LMETB schools and colleges. Care structures and supporting positive wellbeing are well supported by staff in key positions such as class teachers and members of the student services team including Guidance Counsellors in our post primary schools. LMETB schools and colleges also consider how the school community is responding to student needs and in particular those students dealing with particular challenges. Effective partnerships continue to be maintained with the Educational Welfare Services, TUSLA, National Educational Psychological Services (NEPS) and the National Council for Special Education (NCSE).

How do LMETB Schools and Colleges support students with Additional Educational Needs/Special Educational Needs? In all LMETB schools and colleges effective structures are in place to support students with Special Educational Needs (SEN) In class support and team teaching models continue to be developed in our schools and colleges. Student Support Files are developed for SEN students in partnership with students, staff, parents and external agencies working with the student including NCSE, HSE and NEPS.

How many Special Classes/Special Needs Units have been opened in LMETB Schools and Colleges? We are also delighted to confirm that we have expanded our provision of Special Classes for students with Autism across schools in the two counties with a total of 22 Special Classes now opened to students as at the commencement of the 2021/2022 academic year



In all LMETB schools and colleges effective structures are in place to support students with Special Educational Needs



What Leadership opportunities are available for my son/daughter in LMETB Schools and Colleges? In developing leaders of the future, students attending LMETB schools and colleges have opportunities to assume leadership roles include peer mentoring programmes, Head Boy, Head Girl, prefect system, green schools committee, amber flag committee, yellow flag committee, sports team and school digital leaders to name but a few.

Do LMETB Schools and Colleges have a Student Council? The Student Council in LMETB Schools and Colleges is a valuable resource for management, staff and students as it enables students to have an active role in the many school related areas including policy making for the school. The Student Council provides a means of communication between the students, staff and management. The council have opportunities to discuss issues of concern raised by students and bring their concerns and suggested solutions to the notice of management for consideration. The council may also organise fundraising events, thus raising awareness and funds for various charities. Opportunities are also provided for the Student Council to meet with the Board of Management of the school/college to discuss their plans for an academic year



discuss issues of concern raised by students and bring their concerns and suggested solutions to the notice of management for consideration. The committee may also organise projects, initiatives and themed weeks in schools thus raising awareness and support for the Green agenda. Opportunities are also provided for the Green Schools Committee to meet with the Board of Management of the school/college to discuss their plans for an academic year

How do LMETB Schools and Colleges celebrate and promote Student Achievement in curricular, co-curricular and extra-curricular activities?

Numerous opportunities are scheduled in LMETB schools and colleges to reward students for their achievements and successes throughout the academic year. The school communicates successes and achievements to parents through a selection of methods including postcards home, awards ceremonies, graduation ceremonies, school newsletters, letters/notes of commendation sent home and regular updates on the school's website, Facebook and/or twitter pages. Regular awards include those in the areas of attendance, subject achievement, extra - curricular achievement, co-curricular achievement, student of the year and student leadership awards.

How do LMETB Schools and Colleges track my son's/daughter's performance and achievement over the course of their primary and/or post primary education? To ensure each student is supported in achieving their potential schools engage in ongoing monitoring and tracking of student progress over the course of their time in the school. Regular reports are provided to parents/guardians to advise them of academic progress. Class teachers, special education teachers, care support team and the school Deputy Principal and Principal are always available to advise students and their parents/guardians regarding progress to date, target setting and any additional supports needed to reach specific targets.

Do LMETB Schools and Colleges have a Green Schools Committee? The Green Schools Committee in LMETB Schools and Colleges is a valuable resource for management, staff and students as it enables students to have an active role in the many areas including energy conservation, water conservation, anti - litter initiatives and recycling strategies to name but a few.

The Green Schools Committee provides a means of communication between the students, staff and management. The committee have opportunities to



What has been the experience for LMETB students in the Leaving Certificate Examinations?

LMETB students have excelled in State Examinations and the collective results of all our examination students are outstanding. Achievements like this demonstrate that commitment and hard work on the part of students is rewarded by fantastic results. These excellent results also demonstrate the competence, expertise and the experience of our teaching staff who guide students towards exam success.

Across LMETB schools and colleges there has been a marked increase in the numbers of students taking higher level papers in a range of subjects. Exceptional results have been achieved in a range of subjects and indeed many subject department across our schools report results over the national averages. A number of our Leaving Certificate students achieve maximum points and our students continue to pursue courses and careers in a range of areas.

The high numbers of students achieving scholarships and awards is one to be celebrated in LMETB schools and colleges.

Effective School Self Evaluation processes are in place in LMETB schools and colleges. A thorough analysis of student attainment and the development of action plans for improvement and moving forward are carried out by management and staff regularly. As mentioned earlier student tracking and monitoring of progress has greatly assisted all members of the school community in ensuring that students are working to the best of their potential and securing the results they deserve.

How does the School's Parents Association work with LMETB Schools and Colleges?

Parents Associations are an integral part of each of our school communities. Parents Associations make vital and valuable contributions to the school's promotion, growth and development and are consulted on a selection of school policies. LMETB Parents Association members also invest a huge amount of their free time, energy and commitment into the organisation of fundraising activities to improve the resources available to the young people in our schools.



What is the role of the Director of Schools in LMETB?

The Director of Schools has responsibility for Leadership of Teaching and Learning, Governance and Management, Workforce Planning and Performance Management and Co-ordination of the ETB's Management and Leadership team of over 60 Principals and Deputy Principals.

What supports are available to LMETB Schools and Colleges from LMETB Head Offices?

LMETB schools and colleges avail of a range of supports from LMETB's Head Offices including Human Resources, Buildings, ICT, Finance and Corporate Education Services. This network of support between the Schools Directorate and Head Office supports the work of the LMETB Board in ensuring that LMETB schools and colleges are compliant in the areas of Corporate Governance and Compliance.

What Child Safeguarding measures are in place in LMETB Schools and Colleges?

Each LMETB School and College has a Child Safeguarding Statement which includes a Risk Assessment in place. The name of the designated liaison person and deputy designated liaison person for child protection and child safeguarding matters is prominently displayed in the school's reception area. All teachers are aware that they are mandated persons and of their responsibilities in that regard. Ongoing continuous professional development is provided to the Designated Liaison Person (DLP), the Deputy Designated Liaison Person (DDL), the Board of Management, teachers as mandated persons and other school staff. Training is provided through a combination of school training, LMETB training and training facilitated by external agencies including TUSLA and the Professional Development Service for Teachers (PDST) of the Department of Education.

As per Chapter 9 of the Child Protection Procedures for Primary and Post Primary Schools 2017, the Principal will provide a Child Protection Oversight Report to the members of the Board of Management at each meeting. The Board of Management will also engage in a yearly review of the Child Safeguarding Statement which includes the school Risk Assessment.





Post Primary Schools

(18)





Beaufort College, Navan, Co. Meath

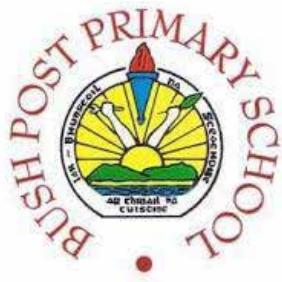
Principal: Mr. Ken Flynn

Deputy Principals: Ms. Anne Marie Mc Carrick | Ms. Karen Tobin

Phone: 046-9028915

Email: beaufortcollege@lmetb.ie

Website: www.beaufortcollege.ie



Ar Thriail Na Tuiscine
In search of Understanding

Bush Post Primary School, Dundalk, Co. Louth

Principal: Mr. Kevin Joyce

Deputy Principals: Ms. Sinead Mc Donnell | Ms. Rosanna Hart

Phone: 042-9376246

Email: bushpp@lmetb.ie

Website: www.bpps.ie



Dunshaughlin Community College, Dunshaughlin, Co. Meath

Principal: Ms. Bridget Bennett

Deputy Principals: Ms. Cathy Byrne | Mr. Kevin Reilly
| Ms. Marie Gaffney

Phone: 01-825 9137

Email: dunshaughlincc@lmetb.ie

Website: www.dunshaughlincc.ie





Coláiste Chú Chulainn
Cúram. Forbairt. Feabhas.

Coláiste Chú Chulainn, Dundalk, Co. Louth

Principal: Mr. Thomas Sharkey

Deputy Principals: Mr. Richard Melaniphy | Ms. Niamh O'Neill

Phone: 042-9354553

Email: colaistecc@lmetb.ie

Website: www.colaiстеcc.ie

Coláiste Na hInse



Dearfachas, Bród, Uaillmhíar

Coláiste na hInse, Laytown, Co. Meath

Principal: Ms. Eilis Flood

Deputy Principals: Ms. Sarah Ross | Ms. Gabrielle Harte
| Mr. Martin McCabe

Phone: 041-9813335

Email: colaistenahinse@lmetb.ie

Website: www.colaiستنahinse.ie



Coláiste na Mí, Navan, Co. Meath

Principal: Mr. Patrick Carr

Deputy Principals: Ms. Gemma O'Hart | Mr. Michael Mc Carthy

Phone: 046-9012130

Email: colaistenami@lmetb.ie

Website: www.colaiستنami.ie





Coláiste Pobail, Rathcairn, Co. Meath

Principal: Ms. Róisín Ni Dhúshláine

Deputy Principal: Mr. Proinsias O' Luachra

Phone: 046-9432722

Email: cprc@lmetb.ie

Website: www.cprathcairn.ie



Coláiste de Lacy, Ashbourne, Co. Meath

Principal: Ms. Janice Corrigan

Deputy Principals: Mr. Barry O' Higgins
| Ms. Stephanie Spillane

Phone: 086-4102507

Email: colaistedelacy@lmetb.ie

Website: www.colaiistedelacy.ie



Coláiste Ríoga, Dunshaughlin, Co. Meath

Principal: Mr. Declan Clarke

Deputy Principal: Ms. Shabana Hussain Dowd

Phone: 087- 6117987

Email: colaisterioga@lmetb.ie

Website: www.colaiasterioga.ie



Enfield Community College

Principal: Mr. Shane Foley

Deputy Principal: Mr. Gordon Mc Donnell

Phone: 086-0353120

Email: enfieldcommunitycollege@lmetb.ie

Website: www.enfieldcc.ie



O'Carolan College, Nobber, Co. Meath

Principal: Mr. Cathal Rogers

Deputy Principal: Ms. Helen Loftus

Phone: 046-905 2177

Email: OCarolanCollege@LMETB.ie

Website: www.ocarolancollege.ie



O'Faich College, Dundalk, Co. Louth

Principal: Mr. Pdraig Mc Govern

Deputy Principals: Mr. Ken Rea | Ms. Audrey Flood | Mr. John Caraher

Phone: 042-9331398

Email: info@ofi.ie

Website: www.ofiaichcollege.ie



Ratoath College, Ratoath, Co. Meath

Principal: Mr. Seamus Meehan

Deputy Principals: Mr. Colm Connolly | Ms. Donna Kelly
| Mr. John McCarthy

Phone: 01-8254102

Email: ratoathcollege@lmetb.ie

Website: www.ratoathcollege.ie



Scoil Uí Mhuirí, Dunleer, Co. Louth

Principal: Ms. Una Kirk

Deputy Principal: Mr. Mark Flanagan

Phone: 041-6851344

Email: scoilumhuiri@lmetb.ie

Website: www.scoilumhuiri.ie



Colaiste Clavin, Longwood, Co. Meath

Principal: Ms. Margaret Deegan

Deputy Principal: Ms. Orla Mc Bride

Phone: 046-955 5018

Email: colaisteclavin@lmetb.ie

Website: www.colaisteclavin.ie



St Oliver Post Primary
Educating, Empowering, Caring



St. Oliver's Post Primary School, Oldcastle, Co. Meath

Principal: Mr. Brendan Corcoran

Deputy Principal: Mr. Micheal Mc Cafferty

Phone: 049-8541180

Email: stoliverpostprimary@lmetb.ie

Website: www.stoliverspps.ie



St. Oliver's Community College, Drogheda, Co. Louth

Principal: Mr. John Halpin

Deputy Principals: Ms. John Heeney | Ms. Trudy Rossiter
| Mr. Ian Gardiner

Phone: 041-9838390

Email: socc@lmetb.ie

Website: www.socc.ie



St. Peter's College, Dunboyne, Co. Meath

Principal: Ms. Deirdre Maye

Deputy Principals: Ms. Leonara Acton | Ms. Gretta Judge
| Mr. Brian McNamara

Phone: 01-8252552

Email: stpeterscollege@lmetb.ie

Website: www.stpeterscc.ie

Community National Schools

(4)



Ard Rí
Community National
School

Ard Rí Community National School, Navan, Co. Meath

Principal: Mr. Darragh Roe

Deputy Principal: Ms. Emer Kavanagh

Phone: 087-1341007

Email: ardricsn@lmetb.ie

Website: www.ardricsn.ie



Faughart Community National School, Dundalk, Co. Louth

Principal: Ms. Jacqui Mc Cusker

Deputy Principal: Ms. Saoirse Mc Dermott

Phone: 042-9371931

Email: faughartcns@lmetb.ie

Website: www.faughartcns.ie





Dunshaughlin Community National School, Dunshaughlin, Meath

Principal: Ms. Yvonne Slevin

Phone: 086-852 2070

Email: dunshaughlincns@lmetb.ie

Website: www.dunshaughlincns.ie



Ashbourne Community National School, Ashbourne, Meath

Principal: Ms. Jenny Byrne

Deputy Principal: Mr. Seamus Mc Carthy

Phone: 086-8522068

Email: ashbournecns@lmetb.ie

Website: www.ashbournecns.ie



Centre for European Schooling

(1)

**Centre for European Schooling, Dunshaughlin,
Co. Meath**



Principal: Ms. Nollaig Gavin

Phone: 01-8259679

Email: ngavin.ces@lmetb.ie

Website: www.europeanschooling.eu





Schools/Colleges where LMETB is Joint Patron (6)





Ardee Community School, Ardee, Co. Louth

Principal: Ms. Mary Jackson

Phone: 041-685 3557

Email: info@ardeecommunityschool.ie

Website: www.ardeecommunityschool.ie



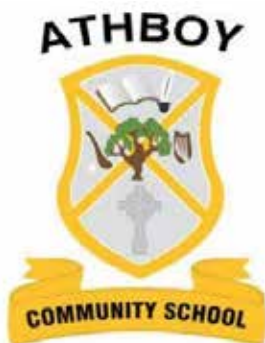
Ashbourne Community School, Ashbourne, Co. Meath

Principal: Mr. Ciarán Stewart

Phone: 01-835 3066

Email: admin@ashcom.ie

Website: [www.https://www.ashcom.ie](https://www.ashcom.ie)



Athboy Community School, Athboy, Co. Meath

Principal: Mr. Anthony Leavy

Phone: 046-948 7894

Email: athboycom.net

Website: www.athboycom.net



Ballymakenny College, Drogheda, Co. Louth

Principal: Mr. Alan Mynes

Phone: 041-980 2459

Email: info@ballymakennycollege.ie

Website: www.ballymakennycollege.ie



Boyne Community School, Trim, Co. Meath

Principal: Ms. Jean Ryan

Phone: 046-948 1654

Email: info@boynecs.ie

Website: www.boynecs.ie

ST CIARÁN'S
COMMUNITY SCHOOL



OMNES VIRTUTEM SEQUENTES

St. Ciarán's Community School, Kells, Co. Meath

Principal: Ms. Cara McLaughlin

Phone: 046-924 1551

Email: office@stciaranscs.ie

Website: www.stciaranscs.ie



lmetb

*Bord Oideachais agus
Oiliúna Lú agus na Mí*
Louth and Meath Education
and Training Board



SCHOOLS DIRECTORATE, LMETB

LMETB Administrative Offices

Chapel Street, Dundalk

Co Louth, A91 C7D8

☎ 042 933 4047 / 086 074 9302

✉ education@lmetb.ie / fclinton@lmetb.ie

🌐 www.lmetb.ie  @louthmeathetb

 @louthmeathetb  @LouthMeathETB

