



Service Plan 2018

Table of contents

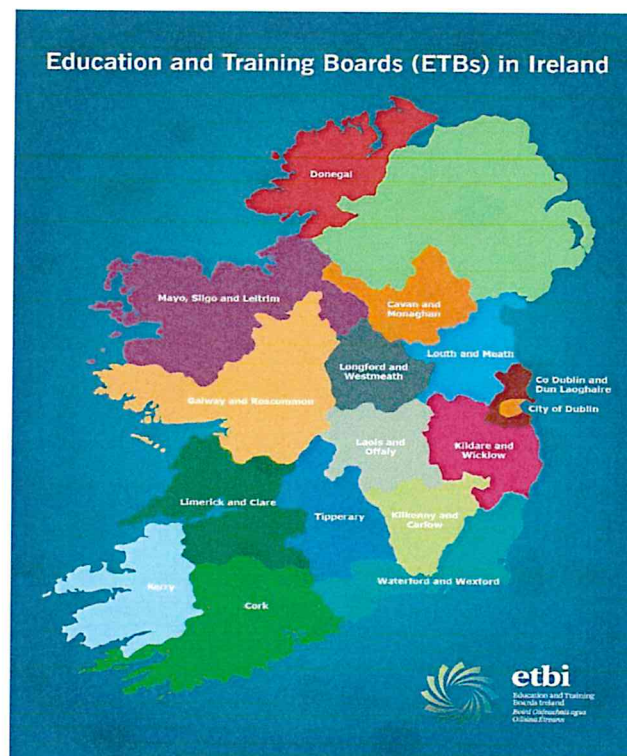
Education & Training Boards	3-4
Foreword from CE	5
Geographic areas and locations	6-7
Statement of Services – Schools	8
Statement of Services – Further Education & Training including Youth Services	9
Statement of Services –Organisation Services	10
Projected receipts & expenditures	11-13

Education & Training Boards

ETBs are statutory authorities which have responsibility for education and training, youth work and a range of other statutory functions. ETBs manage and operate second-level schools, further education colleges, multi-faith community national schools and a range of adult and further education and training centres delivering education and training programmes. The general functions of an Education and Training Board are set out in the Education and Training Boards Act 2013.

Geographical Structure

There are a total of sixteen (16) ETB's throughout the country configured as follows



First Level Education

ETBs are the patron designates of a number of community national schools. Founded in local communities, these schools are child-centred, inclusive, multi-belief, State supported schools which strive to provide a high quality primary education for every child in line with the Primary School Curriculum and guidelines laid down by the Department of Education and Skills.

Second Level Education

ETBs manage one third of all second level schools in the country – education for over 100,000 students. They operate inclusive enrolment policies and also cater for a significant number of students with special needs.

Further Education & Training

ETBs provide further education and training to over 20,000 adults and young people annually. Services are delivered through a variety of programmes to meet a diverse range of needs including literacy and numeracy, skills training, apprenticeship, Youthreach, Back to education initiatives and community based education/training etc.

Youth Services

Youth Services deliver and support a range of programmes for young people.

Other Supports

ETBs also co-operate with other statutory agencies and national and local stakeholder groups to deliver a variety of programmes catering to the diverse needs of client groups in local communities.

ETBI (Education & Training Boards Ireland)

ETBI is the national representative body for member ETBs and negotiates on behalf of the ETB sector at various fora both within the education sector, the wider public service and at EU level.

Foreword from CE



I am pleased, as Chief Executive of Louth and Meath ETB, to present the 2018 Louth and Meath Education and Training Board (LMETB) Service Plan. LMETB is a progressive dynamic organisation which responds to the needs of a growing population.

Demographic changes and population growth in Louth and Meath has contributed to this very exciting and challenging period for LMETB. Increased enrolments and the commencement of new schools and building extension projects in both counties reflect these changes.

In 2017 Coláiste Clavin opened its doors in Longwood, Co. Meath. I take this opportunity to wish the Students, Principal and Staff every success in their new building. Significant investment has also occurred in delivering Special Needs Units and in developing ICT services across our schools and centres. A significant number of new courses and programmes were also established. I look forward to building on this investment in 2018.

In 2018 LMETB plan to secure planning permission for O' Carolan College, Nobber and it is envisaged that we will commence construction in 2019. A number of major extensions at Ratoath College, St Peter's College Dunboyne, Scoil Uí Mhuirí, Dunleer and Beaufort College in Navan are due for completion and I know this investment will make a huge difference to the daily lives of both staff and pupils, ultimately enhancing teaching and learning and affording all state of the art facilities. LMETB is very pleased with the progress made by Ard Rí Community National School and we hope to secure a site and commence the procurement of a new school building for them in 2018

I look forward to these and other new and exciting developments and opportunities into and beyond 2018.

Martin G. O' Brien

Chief Executive

Geographic areas and locations

Louth and Meath Education and Training Board provides an extensive range of education, training services and support across both counties. A full listing of schools and further education and training services are provided below.

Background & Statistical information

Louth and Meath Education and Training Board (LMETB) was established on 1st July 2013 under the Education and Training Boards Act, 2013, as an amalgamation of Louth and Meath VECs. It has a corporate structure which is made up of a democratically appointed board and a senior management (executive) team.

LMETB serves the counties of Louth and Meath with a population of circa 323,317 people. An analysis by county is presented below

Population and Actual and Percentage Change 2011 to 2016*

Louth	Population	128,375
	Actual change since 2011	5,478
	% change since 2011	4.5%
Meath	Population	194,942
	Actual change since 2011	10,807
	% change since 2011	5.9%
Louth & Meath	Population	323,317
	Actual change since 2011	16,285
	% change since 2011	5.3%

**Central Statistics Office Preliminary Data*

The services we provide include primary level education, second level education, further education and training and youth related services in addition to other community based education programmes and services. All services are delivered at local level.

LMETB target clients are:

- Students and/or their parents/guardians
- Adult learners

- Communities throughout the county
- Young people and volunteers
- Applicants and grant recipients under the various student support schemes administered directly by the ETB
- Voluntary, community and sporting organisations

LMETB manages and operates:

- 16 2nd level schools including 2
- with PLC provision
- 2 PLC colleges
- 1 Community National School
- 1 Training Centre
- 1 Centre for European Schooling
- 9 Youthreach Centres
- A range of further education and training centres delivering education and training programmes

LMETB is joint patron of 6 Community Schools at:

Ardee, Kells, Trim, Athboy, Ashbourne, and Ballymakenny College Drogheda

LMETB are active in local communities through the direct provision of training and education programmes delivered in local Centres, Colleges and other training and educational settings. LMETB seek to make a real difference to the lives of the people they serve.

Statement of Services –Schools

LMETB manages and operates the following schools:

	Beaufort College, Navan	Angela Crowcock	beaufortcollege@lmetb.ie	72010I
	Bush Post Primary School, Dundalk	Kevin Joyce	bushpp@lmetb.ie	71750U
	Centre for European Schooling, Dunshaughlin	Nollaig Gavin	ces@lmetb.ie	17930Q
	Coláiste De Lacy, Ashbourne	Janice Corrigan	colaistedelacy@lmetb.ie	76196W
	Coláiste Lú/Coláiste Chú Chulainn, Dundalk	Deirdre Uí Liatháin	colaistecc@lmetb.ie	76195U
	Coláiste na hInse, Laytown	AnneMarie McCarrick	colaistenahinse.CNI@lmetb.ie	76103M
	Coláiste na Mí, Navan	Paddy Carr	colaistenami@lmetb.ie	76173K
	Coláiste Pobail Rathcairn	Macdara O' Duillearga	cprc@lmetb.ie	71991T
	Dunshaughlin Community College	Shane Foley	dunshaughlincc@lmetb.ie	71960I
	O' Carolan College, Nobber	Cathal Rogers	ocarolancollege@lmetb.ie	71980O
	O' Fiaich College, Dundalk	Padraig McGovern	ofi@lmetb.ie	71770D
	Ratoath College	Oonagh Prendergast	ratoathcollege@lmetb.ie	76088T
	Scoil Uí Mhuirí, Dunleer	Eilis Flood	scoiluimhuiri@lmetb.ie	71780G
	St. Fintina's Post Primary School, Longwood			Dunboyne
	St. Oliver's Community College, Drogheda			
	St. Peter's College,			

Tom	Stack	71970L	John	Halpin
	stfin		socc@lmetb.ie	71761C
tinas@lmetb.ie		Maureen Murray	stpeterscollege@lmetb.ie	71950F
	St. Oliver Post Primary School, Oldcastle	Brendan Corcoran	stoliverpostprimary@lmetb.ie	71990R
	Ard Ri Community National School, Navan	Darragh Roe	ardrics@lmetb.ie	20352T

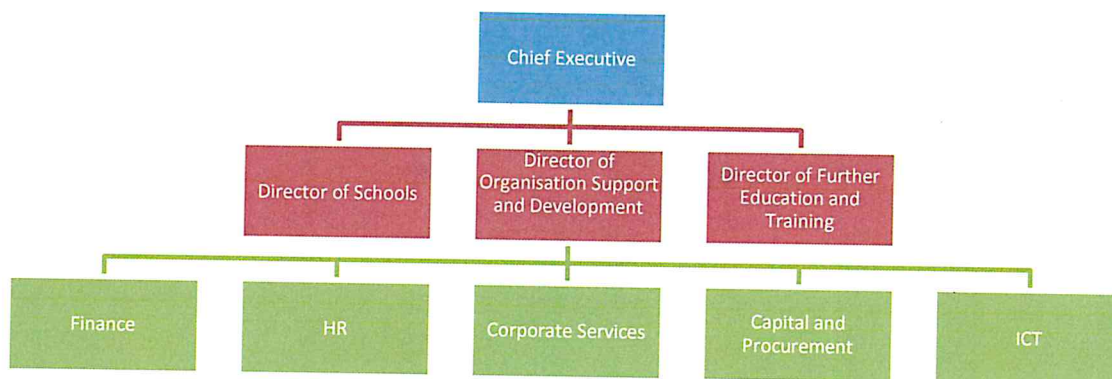
Statement of Services – Further Education & Training including Youth Services

Further Education and Training Centres			
Regional Skills and Training Centre Dundalk			
Drogheda Institute of Further Education			
Dunboyne College of Further Education			
VTOS	Drogheda	Dundalk	Navan
Adult Learning Services	Drogheda	Dundalk	Navan
Adult Guidance recruitment and information service.	Trim	Kells	Oldcastle
Back to Education Initiative	Mosney	Laytown/ Bettystown	Dunshaughlin
Community Education	Dunboyne	Athboy	Ashbourne
Evening Course Provision	9 centres in Louth and Meath		
Quality Assurance	All centres operating certificated programmes		
Music Generation	Louth		
Youth Services	Louth	Meath	
EU Projects	Meath		

Youthreach Centres	Dundalk
Drogheda	Youthreach Progression & Hi-Way Café Navan
Youthreach Foundation Navan	Kells
Trim	Laytown/Bettystown
Ashbourne	Ardee

Statement of Services –Organisation Support and Development Services

In Louth and Meath Education and Training Board these services are located in the Directorate of Organisation Support and Development. This directorate restructured in 2017 so as to promote a more efficient interaction with the front line services that the Directorate supports, to achieve single location for each function under the directorate and to co-locate those services which best fit together under each pillar of the directorate. A diagram depicting the structure at a high level is included below. The Directorate's goals are to enhance those processes and procedures that underpin good corporate governance in LMETB and to ensure that human, financial and infrastructural resources appropriate to the delivery of front line services are deployed across the organisation.



The LMETB Capital plan provides for expenditure of €13.5 million in schools and head office. The main items are completion the extensions at Ratoath College €1.5m, St. Peter's College, Dunboyne €360,000, Scoil Uí Mhuiri, Dunleer €3m, Beaufort College Navan €650,000, Ardee Community School extension €2,300,000 (this is not an LMETB school however LMETB is managing the project on behalf of the Department of Education & Skills) and new ETB head office in Drogheda €3,500,000.

LMETB is submitting a request for capital funding of €49.1 million for further education and training. This includes €42m for a new Further Education Centre for Dunboyne College of Further Education, refurbishment of the Regional Skills & Training Centre €2m and additional facilities in O'Faich College €1m.

LOUTH AND MEATH EDUCATION AND TRAINING BOARD

Receipts and Payments

	Reference Page	Projected Year ended 31/12/2018 €	Actual (Draft) Year ended 31/12/2017 €
RECEIPTS			
Schools and Head Offices Grants		71,909,438	66,868,522
Community National School		129,591	147,893
Further Education and Training Grants		81,229,103	28,344,030
Youth Services Grants		693,371	795,422
Agencies and Self-Financing Projects		5,297,977	7,301,910
Capital - Schools and Head Offices		13,478,000	22,766,168
		<u>172,737,480</u>	<u>126,223,945</u>
PAYMENTS			
Schools and Head Office	12	71,909,438	67,855,637
Community National School		129,591	123,420
Further Education and Training	13	81,229,103	27,779,516
Youth Services		693,371	641,982
Agencies and Self-Financing Projects		7,208,605	7,056,699
Capital - Schools and Head Offices		13,478,000	22,717,239
		<u>174,648,108</u>	<u>126,174,492</u>
Cash Surplus / (Deficit) For Period		(1,910,628)	49,452

Note: 2017 figures are subject to finalisation and audit

LOUTH AND MEATH EDUCATION AND TRAINING BOARD

Schools and Head Offices

	Projected Year ended 31/12/2018 €	Actual (Draft) Year ended 31/12/2017 €
PAY		
Instruction	61,160,311	56,542,856
Administration	3,021,415	2,636,539
Maintenance	1,531,552	1,301,440
	65,713,278	60,480,835
NON PAY		
Administration	2,053,695	2,313,147
Maintenance	1,646,708	1,854,744
Instruction	155,320	174,942
	3,855,723	4,342,833
ASSOCIATED PROGRAMMES		
School Services Support	1,207,910	2,212,680
DEIS Funding	226,000	195,644
Transition Year Programme	98,420	74,530
Leaving Certificate Applied	47,414	38,664
Language Assistant Scheme	32,896	32,251
Traveller Pupil Capitation Grant	11,859	20,388
Book Grant	313,278	275,986
Physics/Chemistry Grant	9,841	22,690
Junior Certificate Schools Programme	9,840	16,610
Woodwork	3,173	3,111
Design and Communication Graphics	4,156	4,075
Library Grant	16,536	16,212
Transport Escort	22,525	22,084
Special Class Group Grant	526	515
Special Needs Grant	14,653	14,366
In Career Travel	3,159	3,097
Behavioural Support	189	185
CPD for Junior Cycle	2,293	2,248
Digital ICT Strategy	310,442	71,412
IT 2000	2,185	2,143
Staff Development	3,142	3,080
	2,340,437	3,031,968
TOTAL	71,909,438	67,855,637

LOUTH AND MEATH EDUCATION AND TRAINING BOARD

FURTHER EDUCATION AND TRAINING PAYMENTS	Projected Year Ended 31/12/2018	Actual (Draft) Year Ended 31/12/2017
	Total €	Total €
FURTHER EDUCATION		
VTOS	2,005,196	2,024,691
Youthreach	4,323,019	4,349,824
Special Education Needs	63,876	63,876
Adult Literacy	1,115,716	1,110,919
DEIS Family Literacy	44,923	44,400
Intensive Tuition	120,386	75,834
ESOL	265,744	219,042
Skills for Work	83,763	30,582
Refugee Programmes	124,229	122,828
Back to Education Initiative	1,664,631	1,209,490
Adult Education Guidance	338,517	310,563
Community Education	560,500	336,785
PLC Rent	311,509	311,509
PLC Enhanced Capitation	281,090	179,073
PLC Non-Pay	808,625	0
Guidance Counselling & Psychological Services	72,823	72,823
FETAC Locally Devised Assessment	204,081	189,081
Quality Framework	162,347	22,347
FETAC Authentication	33,075	33,075
Continuing Professional Development	170,997	997
Innovative Projects	193,524	133,961
Other operational costs (Repair and Maintenance)	868,800	416,984
Total Further Education	13,817,372	11,258,684
	0	
TRAINING		
Specialist Training Providers (STP)	2,138,505	2,138,505
Local Training Initiatives	1,687,711	1,687,711
Bridging Foundation & Skills Training	65,672	65,672
Training Centre Staff & Operations	3,460,536	3,427,221
Community Training Centres	963,606	963,606
Traineeships	2,518,834	1,355,594
Apprenticeship	4,979,097	4,240,997
Evening Courses	214,098	211,867
Skills Training	2,248,048	2,248,048
Total Training	18,276,107	16,339,221
CAPITAL	49,135,625	181,612
TOTAL FURTHER EDUCATION AND TRAINING	81,229,103	27,779,516