



Service Plan 2017

Table of contents

Education & Training Boards	3-4
Foreword from CE	5
Geographic areas and locations	6-7
Statement of Services – Schools	8
Statement of Services – Further Education & Training including Youth Services	9
Statement of Services –Organisation Services	10
Projected receipts & expenditures	11-14

Education & Training Boards

ETBs are statutory authorities which have responsibility for education and training, youth work and a range of other statutory functions. ETBs manage and operate second-level schools, further education colleges, multi-faith community national schools and a range of adult and further education and training centres delivering education and training programmes. The general functions of an Education and Training Board are set out in the Education and Training Boards Act 2013.

Geographical Structure

There are a total of sixteen (16) ETB's throughout the country configured as follows



First Level Education

ETBs are the patron designates of a number of community national schools. Founded in local communities, these schools are child-centred, inclusive, multi-belief, State supported schools which strive to provide a high quality primary education for every child in line with the Primary School Curriculum and guidelines laid down by the Department of Education and Skills.

Second Level Education

ETBs manage one third of all second level schools in the country – education for over 100,000 students. They operate inclusive enrolment policies and also cater for a significant number of students with special needs.

Further Education & Training

ETBs provide further education and training to over 200,000 adults and young people annually. Services are delivered through a variety of programmes to meet a diverse range of needs including literacy and numeracy, skills training, apprenticeship, Youthreach, Back to education initiatives and community based education/training etc.

Youth Services

Youth Services deliver and support a range of programmes for young people.

Other Supports

ETBs also co-operate with other statutory agencies and national and local stakeholder groups to deliver a variety of programmes catering to the diverse needs of client groups in local communities.

ETBI (Education & Training Boards Ireland)

ETBI is the national representative body for member ETBs and negotiates on behalf of the ETB sector at various fora both within the education sector, the wider public service and at EU level.

Foreword from CE



I am pleased, as Chief Executive of Louth and Meath ETB, to present the 2017 Louth and Meath Education and Training Board (LMETB) Service Plan. LMETB is a progressive dynamic organisation which responds to the needs of a growing population.

Demographic changes and population growth in Louth and Meath has contributed to this very exciting and challenging period for LMETB. Increased enrolments and the commencement of new schools and building extension projects in both counties reflect these changes.

In 2016 phase 1 of the 1,000 pupil school, Coláiste De Lacy's opened its doors in Ashbourne, Co. Meath. Significant investment has also occurred in delivering Special Needs Units and in developing ICT services across our schools and centres. A significant number of new courses and programmes were also established. I look forward to building on this investment in 2017.

In 2017 LMETB will plan to open a 500 pupil school in Longwood, Co. Meath and a number of major extensions at Ratoath College, St Peter's College Dunboyne, Scoil Uí Mhuirí, Dunleer and Beaufort College in Navan. LMETB has also just been announced as the sole patron of Ard Rí Community National School.

I look forward to these and other new and exciting developments and opportunities into and beyond 2017.

Martin G. O'Brien
Chief Executive

Geographic areas and locations

Louth and Meath Education and Training Board provides an extensive range of education, training services and support across both counties. A full listing of schools and further education and training services are provided below.

Background & Statistical information

Louth and Meath Education and Training Board (LMETB) was established on 1st July 2013 under the Education and Training Boards Act, 2013, as an amalgamation of Louth and Meath VECs. It has a corporate structure which is made up of a democratically appointed board and a senior management (executive) team.

LMETB serves the counties of Louth and Meath with a population of circa 323,317 people. An analysis by county is presented below

Population and Actual and Percentage Change 2011 to 2016*

Louth	Population	128,375
	Actual change since 2011	5,478
	% change since 2011	4.5%
Meath	Population	194,942
	Actual change since 2011	10,807
	% change since 2011	5.9%
Louth & Meath	Population	323,317
	Actual change since 2011	16,285
	% change since 2011	5.3%

**Central Statistics Office Preliminary Data*

The services we provide include primary level education, second level education, further education and training and youth related services in addition to other community based education programmes and services. All services are delivered at local level.

LMETB target clients are:

- Students and/or their parents/guardians
- Adult learners

- Communities throughout the county
- Young people and volunteers
- Applicants and grant recipients under the various student support schemes administered directly by the ETB
- Voluntary, community and sporting organisations

LMETB manages and operates:

- 16 2nd level schools including 3 with PLC provision
- 2 PLC colleges
- 1 Community National School
- 1 Training Centre
- 1 Centre for European Schooling
- 9 Youthreach Centres
- A range of further education and training centres delivering education and training programmes

LMETB is joint patron of 6 Community Schools at:

Ardee, Kells, Trim, Athboy, Ashbourne, and Ballymakenny College Drogheda

LMETB are active in local communities through the direct provision of training and education programmes delivered in local Centres, Colleges and other training and educational settings. LMETB seek to make a real difference to the lives of the people they serve.

Statement of Services –Schools

LMETB manages and operates the following schools:

	Beaufort College, Navan	Angela Crowcock	beaufortcollege@lmetb.ie	72010I
	Bush Post Primary School, Dundalk	Kevin Joyce	bushpp@lmetb.ie	71750U
	Centre for European Schooling, Dunshaughlin	Nollaig Gavin	ces@lmetb.ie	17930Q
	Colaiste De Lacy, Ashbourne	Janice Corrigan	colaistedelacy@lmetb.ie	76196W
	Colaiste Lú/Colaiste Chú Chulainn, Dundalk	Deirdre Uí Liatháin	colaistecc@lmetb.ie	76195U
	Colaiste na hInse, Laytown	AnneMarie McCarrick	colaistenahinse.CNI@lmetb.ie	76103M
	Colaiste na Mí, Navan	Paddy Carr	colaistenami@lmetb.ie	76173K
	Colaiste Pobail Rathcairn	Maedara O' Duillearga	cprc@lmetb.ie	71991T
	Dunshaughlin Community College	Shane Foley	dunshaughlincc@lmetb.ie	71960I
	O' Carolan College, Nobber	John Grant	ocarolancollege@lmetb.ie	71980O
	O' Fiaich College, Dundalk	Padraig McGovern	ofi@lmetb.ie	71770D
	Ratoath College	Oonagh Prendergast	ratoathcollege@lmetb.ie	76088T
	Scoil Uí Mhuirí, Dunleer	Eilis Flood	scoiluihmhuiri@lmetb.ie	71780G
	St. Fintina's Post Primary School, Longwood	Tom Stack	stfintinas@lmetb.ie	71970L
	St. Oliver's Community College, Drogheda	John Halpin	socc@lmetb.ie	71761C
	St. Peter's College, Dunboyne	Maureen Murray	stpeterscollege@lmetb.ie	71950F
	St. Oliver Post Primary School, Oldcastle	Brendan Corcoran	stoliverpostprimary@lmetb.ie	71990R
	Ard Rí Community National School, Navan	Darragh Roe	ardrics@lmetb.ie	20352T

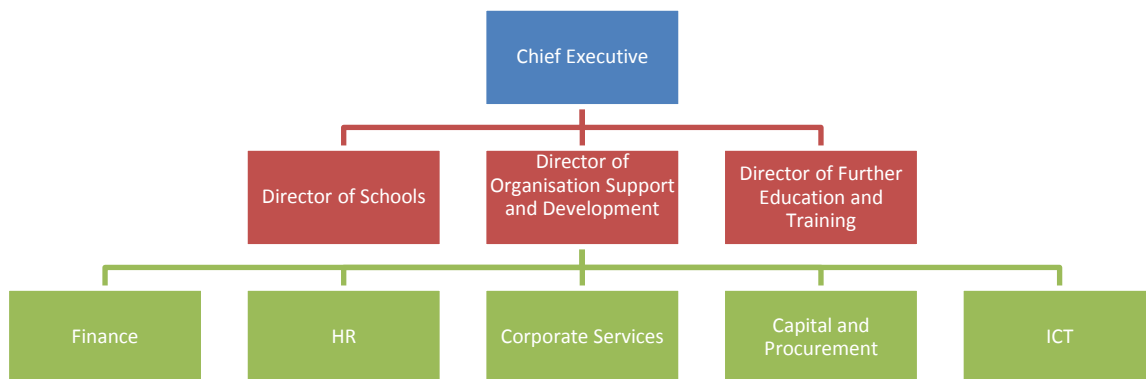
Statement of Services – Further Education & Training including Youth Services

Further Education and Training Centres			
Regional Skills and Training Centre Dundalk			
Drogheda Institute of Further Education			
Dunboyne College of Further Education			
VTOS	Drogheda	Dundalk	Navan
Adult Learning Services	Drogheda	Dundalk	Navan
Adult Guidance recruitment and information service.	Trim	Kells	Oldcastle
Back to Education Initiative	Mosney	Laytown/ Bettystown	Dunshaughlin
Community Education	Dunboyne	Athboy	Ashbourne
Evening Course Provision	11 centres in Louth and Meath		
Music Generation	Louth		
Youth Services	Louth	Meath	
EU Projects	Meath	Louth	
Quality Assurance	Louth	Meath	

Youthreach Centres	Dundalk
Drogheda	Youthreach Progression & Hi-Way Café Navan
Youthreach Foundation Navan	Kells
Trim	Laytown/Bettystown
Ashbourne	Ardee

Statement of Services – Organisation Support and Development Services

In Louth and Meath Education and Training Board these services are located in the Directorate of Organisation Support and Development. This directorate is in the process of a restructure. This is to promote a more efficient interaction with the front line services that the Directorate supports, to achieve single location for each function under the directorate and to co-locate those services which best fit together under each pillar of the directorate. A diagram depicting the structure at a high level is included below. The Directorate’s goals are to enhance those processes and procedures that underpin good corporate governance in LMETB and to ensure that human, financial and infrastructural resources appropriate to the delivery of front line services are deployed across the organisation.



The LMETB Capital plan provides for expenditure of €25.7 million in schools. The main items are completion of new school in Longwood €1m, extension in Ratoath College €2.3m, extension in Scoil Uí Mhuiri, Dunleer €5m, Beaufort College extension €5m, new Head Office Building €3m and Ardee Community School extension €5m (this is not an LMETB school however LMETB is managing the project on behalf of the Department of Education & Skills).

LMETB is submitting a request for capital funding of €7.6 million for further education and training. This includes €3m to construct a full size gymnasium and fitness facility at O’Fiaich College, Dundalk, €1m to refurbish the Regional Skills & Training Centre and €0.8m to replace roof in the Training Centre. Construction of a new permanent building for Coláiste Chu Chulainn/Coláiste Lú in Dundalk commenced in December 2016. This project is devolved to Louth County Council on LMETB’s behalf.

LOUTH AND MEATH EDUCATION AND TRAINING BOARD

Projected Receipts and Expenditures

	Reference Page	Year ended 31/12/2017 €	Year ended 31/12/2016 €
RECEIPTS			
Schools and Head Office Grants		67,389,030	61,157,411
Community National School		52,972	0
Further Education and Training Grants		36,836,951	29,708,762
Student Support Services Grants		40,000	0
Youth Services Grants		305,000	225,614
Agencies and Self-Financing Projects		5,357,370	8,068,840
Capital		25,721,000	14,711,299
		135,702,323	113,871,925
PAYMENTS			
Schools and Head Office	12	67,389,030	61,085,330
Community National School		52,972	0
Further Education and Training	13/14	36,836,951	30,505,697
Student Support Services		40,000	76,154
Youth Services		305,000	232,914
Agencies and Self-Financing Projects		5,357,370	5,102,257
Capital		25,721,000	15,347,612
		135,702,323	112,349,963
Cash Surplus / (Deficit) For Period		0	1,521,962

Note: the 2016 out-turn is subject to audit

LOUTH AND MEATH EDUCATION AND TRAINING BOARD

Schools and Head Office

SCHOOL AND HEAD OFFICE PAYMENTS	Year ended 31/12/2017 €	Year ended 31/12/2016 €
PAY		
Instruction	56,592,315	51,992,356
Administration	2,790,238	1,966,529
Maintenance	1,475,467	1,284,525
	60,858,020	55,243,410
NON PAY		
Administration	1,819,610	1,821,610
Maintenance	1,800,000	1,877,812
Instruction	279,746	279,746
	3,899,356	3,979,167
	2017	2016
ASSOCIATED PROGRAMMES	Total	Total
	€	€
School Services Support	1,439,858	1,080,077
DEIS Funding	225,000	222,834
Transition Year Programme	88,350	78,461
Leaving Certificate Applied	48,320	26,149
Language Assistant Scheme	34,067	31,741
Traveller Pupil Capitation Grant	22,713	15,253
Book Grant	304,410	294,796
Physics/Chemistry Grant	11,000	10,238
Junior Certificate Schools Programme	10,080	23,275
LCVP Grant	0	(330)
PE Equipment Grant	0	2,525
Woodwork	0	(33)
Design and Communication Graphics	0	15,094
Metalwork and Engineering	0	(926)
Library Grant	45,000	10,009
Transport Escort	36,195	19,933
Special Class Group Grant	0	2,455
Special Needs Grant	15,373	15,804
School Development Planning	0	1,865
ICT Policy Funding Unit	322,609	0
In Career Travel	3,679	3,504
Behavioural Support	0	1,393
Test Materials - Guidance/Learning	0	(583)
CPD for Junior Cycle	25,000	9,018
Science Grant	0	200
	2,631,654	1,862,752
TOTAL	67,389,030	61,085,330

LOUTH AND MEATH EDUCATION AND TRAINING BOARD

FURTHER EDUCATION AND TRAINING PAYMENTS	Year Ended 31/12/2017	Year Ended 31/12/2016
	Total	Total
FURTHER EDUCATION	€	€
VTOS	2,205,966	2,268,360
Youthreach	4,697,918	4,821,720
Special Education Needs	49,202	50,614
Adult Literacy	1,204,722	1,235,992
DEIS Family Literacy	49,620	50,779
Intensive Tuition	99,310	101,717
ESOL	166,587	170,409
Refugee Programmes	241,920	11,770
Back to Education Initiative	1,279,662	1,312,321
Adult Education Guidance	358,380	294,394
Community Education	562,541	577,327
SPIDAS	0	0
PLC Rent	383,457	258,316
PLC Enhanced Capitation	262,909	570,563
Guidance Counselling & Psychological Services	62,689	64,128
FETAC Locally Devised Assessment	193,468	191,869
Innovative Projects	79,724	82,010
Other operational costs	712,954	1,014,623
Skills for work	120,000	N/A
Work force planning	80,000	0
Total Further Education	12,811,029	13,076,912
TRAINING	Total	Total
	€	€
Specialist Training Providers (STP)	2,147,101	2,215,250
Local Training Initiatives	1,683,080	1,736,501
Bridging Foundation & Skills Training	155,150	160,074
Training Centre Staff & Operations	3,814,015	3,912,519
Community Training Centres	934,821	964,492
Traineeships	1,520,000	1,515,732
Apprenticeship	4,120,000	4,118,273
Evening Courses	17,270	17,666

Skills Training	2,684,214	2,769,410
Justice Workshop	0	0
On-Line/Blended Learning/Library	0	0
Other	0	0
		0
Total Training	17,075,651	17,409,917
CAPITAL	6,950,271	18,868
TOTAL FURTHER EDUCATION AND TRAINING	36,836,951	30,505,697